

ALLOWABLE COUNTERWEIGHTS

COUNTERWEIGHT COMBINATIONS <input type="checkbox"/>		ALLOWABLE BOOM LENGTHS	
UPPER + BUMPER		W/O JIB	WITH JIB <input type="checkbox"/>
		OPEN THROAT	
AB On Outriggers <input type="checkbox"/>			
A+A On Outriggers <input type="checkbox"/>		60' - 330'	Prohibited
AB+A On Outriggers <input type="checkbox"/>		18.29 m - 91.44 m	Prohibited
AB+AB On Outriggers <input type="checkbox"/>		60' - 280'	Prohibited
		18.29 m - 85.34 m	Prohibited
		60' - 310'	Prohibited
		18.29 m - 94.49 m	Prohibited
		60' - 290'	Prohibited
		18.29 m - 85.34 m	Prohibited
		60' - 330'	Prohibited
		18.29 m - 91.44 m	Prohibited

- ☐ Counterweight combinations are for a crane equipped with a 250 ton (226.8 m ton) open throat boom. Other counterweight combinations must be used only as shown on this chart, otherwise crane may overturn or upper counterweights, or crane may overturn.
- ☐ Do not swing over the side until outrigger beams are fully extended and outrigger jacks properly set with.
- ☐ Maximum jib length is 90 ft (27.43 m).
- ☐ A - Upper Counterweight - 47,000 lb (21.3 m ton)
- ☐ AB - Upper Counterweight - 85,000 lb (38.6 m ton)
- ☐ AB - Upper Counterweight - 11,400 lb (5.2 m ton)
- ☐ AB - Upper Counterweight - 26,700 lb (12.1 m ton)

LIFTOFF CAPABILITIES ON OUTRIGGERS*

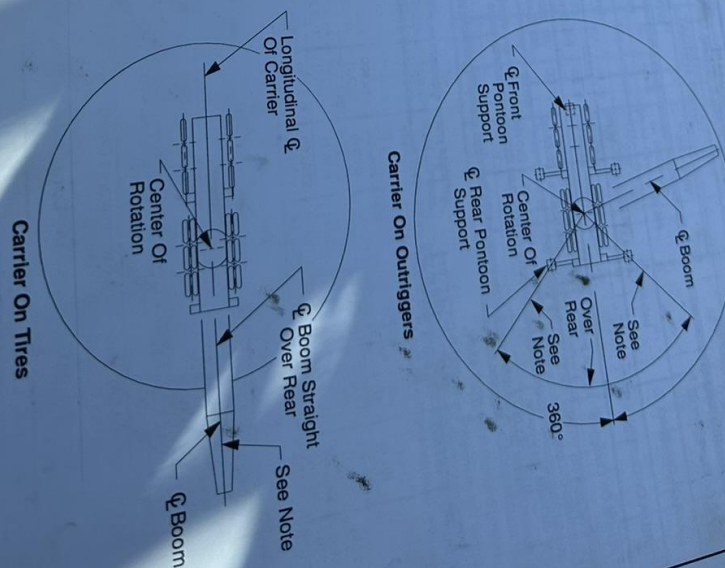
		Maximum Boom + Jib	
		Over Side	Over Rear
		ft	m
Counterweight (Upper + bumper)	Over Side	Over Rear	
	ft	m	
AB+NONE	60	18.29	300
	280	85.34	91.44
A+A	60	18.29	60
	250	76.20	280
AB+A	90	27.43	90
	290	88.39	310
AB+AB	150	45.72	150
	290	88.39	330
		100.58	260 + 90
			79.25 + 12.44
			300 + 90
			91.44 + 27.43

- *NOTES: 1. 95% of available crane stability.
2. Crane on firm and level surface.
3. Open throat booms 240 ft (76.20 m) & longer require mid-point suspension pendants.

WORKING AREAS

Line	Type	1" (25.4 mm)				1-1/2" (38.1 mm)				2" (50.8 mm)			
		MB	HB	MB	HB	MB	HB	MB	HB	MB	HB	MB	HB
1	353,500	18,600	13,500	22,500	37,100	21,200	33,500	38,000	52,400	38,000	52,400	68,000	82,400
2	68,000	760	36,000	36,000	46,500	42,500	61,000	61,000	61,000	61,000	61,000	61,000	61,000
3	68,000	715,000	111,000	670,000	68,100	63,500	113,500	113,500	113,500	113,500	113,500	113,500	113,500
4	116,000	622,000	88,000	88,000	113,500	113,500	113,500	113,500	113,500	113,500	113,500	113,500	113,500
5	145,500	93,500	92,500	92,500	113,500	113,500	113,500	113,500	113,500	113,500	113,500	113,500	113,500
6	177,000	100,800	78,000	78,000	113,500	113,500	113,500	113,500	113,500	113,500	113,500	113,500	113,500
7	206,500	102,800	78,000	78,000	113,500	113,500	113,500	113,500	113,500	113,500	113,500	113,500	113,500
8	236,500	117,200	78,000	78,000	113,500	113,500	113,500	113,500	113,500	113,500	113,500	113,500	113,500
9	265,500	131,400	78,000	78,000	113,500	113,500	113,500	113,500	113,500	113,500	113,500	113,500	113,500
10	295,000	151,200	78,000	78,000	113,500	113,500	113,500	113,500	113,500	113,500	113,500	113,500	113,500
11	324,500	168,600	78,000	78,000	113,500	113,500	113,500	113,500	113,500	113,500	113,500	113,500	113,500
12	354,000	186,000	78,000	78,000	113,500	113,500	113,500	113,500	113,500	113,500	113,500	113,500	113,500
13	383,500	201,600	78,000	78,000	113,500	113,500	113,500	113,500	113,500	113,500	113,500	113,500	113,500
14	413,000	216,000	78,000	78,000	113,500	113,500	113,500	113,500	113,500	113,500	113,500	113,500	113,500
LBCE	413,000	235,200	78,000	78,000	113,500	113,500	113,500	113,500	113,500	113,500	113,500	113,500	113,500
Type	1167.3	1067.7	1144.2	1144.2	1235.6	1134.6	1235.6	1134.6	1235.6	1134.6	1235.6	1134.6	1235.6

Values shown are in pounds (metric tons) and working loads must not exceed the ratings on the charts in this Crane Rating Manual.



Note: These Lines Determine The Limiting Position Of Any Load For Operation Within the Indicated.

Link-Belt

CONSTRUCTION EQUIPMENT

EXTRA 11,000 lbs.
HC-268 # 2773
91,900 TOTAL

CRANE RATING MANUAL

- 68" x 80" (1.73 m x 2.03 m) TUBULAR BOOM
- 30' (9.14 m) OPEN THROAT PEAK SECTION
- 1.25" (31.75 mm) DIAMETER PENDANTS
- WITH LIVE MAST
- LBCE 288" (7.32 m) TRUCK CARRIER

SERIAL NUMBER 28IG-5123B

For Replacement, Order Part Number 28P1129.
031496

© Link-Belt is a registered trademark.

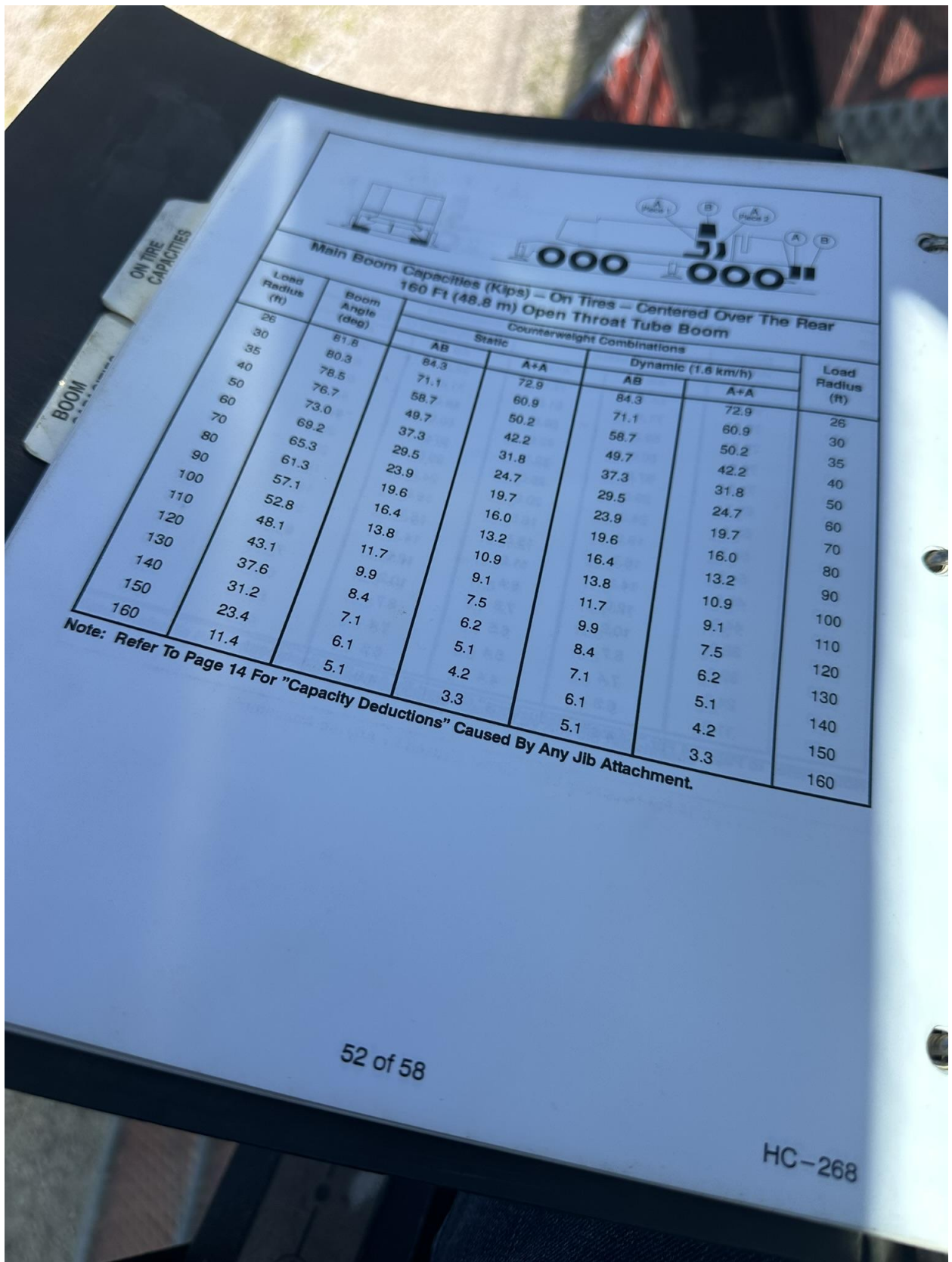
NO CWT. CHAINS
HANGER HEND CHAINS

"INSIDE"

HC-268

1 of 58

28P1130



**Main Boom Capacities (Kips) - On Tires - Centered Over The Rear
160 Ft (48.8 m) Open Throat Tube Boom**

Boom Capacities (Kips) – On Tires – Centered Over The Rear 160 Ft (48.8 m) Open Throat Tube Boom						
Load Radius (ft)	Boom Angle (deg)	Counterweight Combinations				Load Radius (ft)
		Static		Dynamic (1.6 km/h)		
		AB	A+A	AB	A+A	
26	81.8	84.3	72.9	84.3	72.9	26
30	80.3	71.1	60.9	71.1	60.9	30
35	78.5	58.7	50.2	58.7	50.2	35
40	76.7	49.7	42.2	49.7	42.2	40
50	73.0	37.3	31.8	37.3	31.8	50
60	69.2	29.5	24.7	29.5	24.7	60
70	65.3	23.9	19.7	23.9	19.7	70
80	61.3	19.6	16.0	19.6	16.0	80
90	57.1	16.4	13.2	16.4	13.2	90
100	52.8	13.8	10.9	13.8	10.9	100
110	48.1	11.7	9.1	11.7	9.1	110
120	43.1	9.9	7.5	9.9	7.5	120
130	37.6	8.4	6.2	8.4	6.2	130
140	31.2	7.1	5.1	7.1	5.1	140
150	23.4	6.1	4.2	6.1	4.2	150
160	11.4	5.1	3.3	5.1	3.3	160

Note: Refer To Page 14 For "Capacity Deductions" Caused By Any Jib Attachment.

Note: Refer To Page 14 For "Capacity Deductions" Caused By Any Jib Attachment.

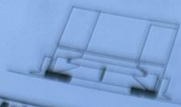


**Main Boom Capacities (Kips) – On Tires – Centered Over The Rear
130 Ft (39.6 m) Open Throat Tube Boom**

Load Radius (ft)	Boom Angle (deg)	Counterweight Combinations				Load Radius (ft)
		Static		Dynamic (1.6 km/h)		
		AB	A+A	AB	A+A	
22	81.7	104.4	90.2	102.6	90.2	22
25	80.3	89.4	77.0	89.4	77.0	25
30	78.1	71.9	61.8	71.9	61.8	30
35	75.8	59.6	51.1	59.6	51.1	35
40	73.5	50.6	43.2	50.6	43.2	40
50	68.9	38.2	32.7	38.2	32.7	50
60	64.1	30.4	25.6	30.4	25.6	60
70	59.1	24.7	20.6	24.7	20.6	70
80	53.8	20.5	16.9	20.5	16.9	80
90	48.1	17.3	14.1	17.3	14.1	90
100	41.9	14.7	11.8	14.7	11.8	100
110	34.7	12.5	9.9	12.5	9.9	110
120	26.0	10.8	8.4	10.8	8.4	120
130	12.7	9.2	7.1	9.2	7.1	130

Note: Refer To Page 14 For "Capacity Deductions" Caused By Any Jib Attachment.

ON TIRE
CAPACITIES



**Main Boom Capacities (Kips) – On Tires – Centered Over The Rear
120 Ft (36.6 m) Open Throat Tube Boom**

Boom Capacities (Kips) — On Tires — Centered Over The Rear 120 Ft (36.6 m) Open Throat Tube Boom						
Load Radius (ft)	Boom Angle (deg)	Counterweight Combinations				Load Radius (ft)
		Static		Dynamic (1.6 km/h)		
		AB	A+A	AB	A+A	
20	81.9	117.3	101.7	108.8	101.7	20
25	79.5	89.7	77.3	89.7	77.3	25
30	77.1	72.2	62.1	72.2	62.1	30
35	74.6	59.9	51.3	59.9	51.3	35
40	72.1	50.9	43.4	50.9	43.4	40
50	67.0	38.5	32.9	38.5	32.9	50
60	61.7	30.7	25.9	30.7	25.9	60
70	56.2	25.0	20.9	25.0	20.9	70
80	50.2	20.8	17.2	20.8	17.2	80
90	43.6	17.5	14.3	17.5	14.3	90
100	36.2	14.9	12.1	14.9	12.1	100
110	27.1	12.8	10.2	12.8	10.2	110
120	13.2	11.0	8.6	11.0	8.6	120

Note: Refer To Page 14 For "Capacity Deductions" Caused By Any Jib Attachment.

Note: Refer To Page 14 For "Capacity Deductions" Caused By Any Jib Attachment.



**Main Boom Capacities (Kips) – On Tires – Centered Over The Rear
110 Ft (33.5 m) Open Throat Tube Boom**

110 ft (33.5 m) Open Throat Tube Boom						
Load Radius (ft)	Boom Angle (deg)	Counterweight Combinations				Load Radius (ft)
		Static		Dynamic (1.6 km/h)		
		AB	A+A	AB	A+A	
19	81.7	125.2	108.6	112.2	108.6	19
20	81.2	117.5	101.9	109.6	101.9	20
25	78.6	89.9	77.6	89.9	77.6	25
30	75.9	72.4	62.3	72.4	62.3	30
35	73.2	60.1	51.6	60.1	51.6	35
40	70.4	51.1	43.7	51.1	43.7	40
50	64.8	38.8	33.2	38.8	33.2	50
60	58.9	31.0	26.1	31.0	26.1	60
70	52.6	25.3	21.1	25.3	21.1	70
80	45.7	21.0	17.4	21.0	17.4	80
90	37.9	17.8	14.6	17.8	14.6	90
100	28.3	15.1	12.3	15.1	12.3	100
110	13.8	13.0	10.4	13.0	10.4	110

Note: Refer To Page 14 For "Capacity Deductions" Caused By Any Jib Attachment.

JIB
CAPACITIES

28P1130

ON TIRE
CAPACITIES



**Main Boom Capacities (Kips) – On Tires – Centered Over The Rear
100 Ft (30.5 m) Open Throat Tube Boom**

ON THE CAPAC

Capacities (Kips) – On Tires – Centered Over The Rear 100 Ft (30.5 m) Open Throat Tube Boom						
Load Radius (ft)	Boom Angle (deg)	Counterweight Combinations				Load Radius (ft)
		Static		Dynamic (1.6 km/h)		
		AB	A+A	AB	A+A	
18	81.5	133.9	116.0	116.1	116.0	18
19	80.9	125.4	108.8	113.0	108.8	19
20	80.3	117.8	102.1	110.3	102.1	20
25	77.4	90.1	77.8	90.1	77.8	25
30	74.4	72.7	62.5	72.7	62.5	30
35	71.4	60.4	51.8	60.4	51.8	35
40	68.4	51.4	43.9	51.4	43.9	40
50	62.1	39.0	33.4	39.0	33.4	50
60	55.4	31.2	26.3	31.2	26.3	60
70	48.1	25.5	21.4	25.5	21.4	70
80	39.8	21.2	17.7	21.2	17.7	80
90	29.7	18.0	14.8	18.0	14.8	90
100	14.5	15.3	12.4	15.3	12.4	100

Note: Refer To Page 14 For "Capacity Deductions" Caused By Any Jib Attachment.

Note: Refer To Page 14 For "Capacity Deductions" Caused By Any Jib Attachment.



**Main Boom Capacities (Kips) – On Tires – Centered Over The Rear
90 Ft (27.4 m) Open Throat Tube Boom**

50' (15.24 m) Open Throat Tube Boom						
Load Radius (ft)	Boom Angle (deg)	Counterweight Combinations				Load Radius (ft)
		Static		Dynamic (1.6 km/h)		
		AB	A+A	AB	A+A	
16	81.8	154.8	134.5	123.5	130.7	16
17	81.2	143.9	124.7	120.1	124.7	17
18	80.5	134.1	116.2	116.8	116.2	18
19	79.9	125.5	108.9	113.7	108.9	19
20	79.2	117.9	102.3	110.7	102.3	20
25	76.0	90.3	78.0	90.3	78.0	25
30	72.7	72.8	62.7	72.8	62.7	30
35	69.3	60.6	52.0	60.6	52.0	35
40	65.8	51.6	44.1	51.6	44.1	40
50	58.6	39.2	33.6	39.2	33.6	50
60	50.8	31.3	26.5	31.3	26.5	60
70	42.0	25.6	21.5	25.6	21.5	70
80	31.4	21.4	17.8	21.4	17.8	80
90	15.2	18.1	14.9	18.1	14.9	90

Note: Refer To Page 14 For "Capacity Deductions" Caused By Any Jib Attachment.



**Main Boom Capacities (Kips) – On Tires – Centered Over The Rear
80 Ft (24.4 m) Open Throat Tube Boom**

80 Ft (24.4 m) Open Throat Tube Boom						
Load Radius (ft)	Boom Angle (deg)	Counterweight Combinations				Load Radius (ft)
		Static		Dynamic (1.6 km/h)		
		AB	A+A	AB	A+A	
15	81.5	166.4	144.4	127.3	134.6	15
16	80.8	153.6	133.2	123.6	130.8	16
17	80.0	142.7	123.5	120.2	123.5	17
18	79.3	133.0	115.1	116.9	115.1	18
19	78.6	124.5	107.9	113.8	107.9	19
20	77.9	117.0	101.3	110.8	101.3	20
25	74.2	89.6	77.3	89.6	77.3	25
30	70.4	72.3	62.2	72.3	62.2	30
35	66.6	60.1	51.6	60.1	51.6	35
40	62.6	51.2	43.8	51.2	43.8	40
50	54.2	39.0	33.3	39.0	33.3	50
60	44.7	31.2	26.3	31.2	26.3	60
70	33.3	25.5	21.4	25.5	21.4	70
80	16.2	21.3	17.7	21.3	17.7	80

Note: Refer To Page 14 For "Capacity Deductions" Caused By Any Jib Attachment.

Note: Refer To Page 14 For "Capacity Deductions" Caused By Any Jib Attachment.

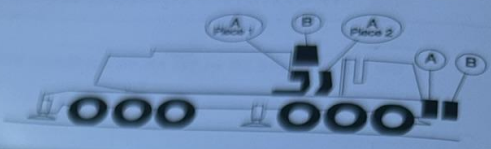


**Main Boom Capacities (Kips) – On Tires – Centered Over The Rear
70 Ft (21.3 m) Open Throat Tube Boom**

Load Radius (ft)	Boom Angle (deg)	Counterweight Combinations				Load Radius (ft)
		Static		Dynamic (1.6 km/h)		
		AB	A+A	AB	A+A	
13	81.9	180.5	173.0	135.9	143.6	13
14	81.1	175.2	157.4	131.8	139.3	14
15	80.3	166.5	144.4	128.0	135.3	15
16	79.4	153.6	133.2	124.3	131.4	16
17	78.6	142.7	123.5	120.9	123.5	17
18	77.8	133.1	115.1	117.6	115.1	18
19	76.9	124.6	107.9	114.5	107.9	19
20	76.1	117.1	101.4	111.5	101.4	20
25	71.8	89.7	77.4	89.7	77.4	25
30	67.5	72.3	62.2	72.3	62.2	30
35	63.0	60.2	51.6	60.2	51.6	35
40	58.3	51.3	43.9	51.3	43.9	40
50	48.0	39.1	33.4	39.1	33.4	50
60	35.7	31.2	26.4	31.2	26.4	60
70	17.3	25.5	21.4	25.5	21.4	70

Note: Refer To Page 14 For "Capacity Deductions" Caused By Any Jib Attachment.

ON TIRE CAPACITIES



**Main Boom Capacities (Kips) – On Tires – Centered Over The Rear
60 Ft (18.3 m) Open Throat Tube Boom**

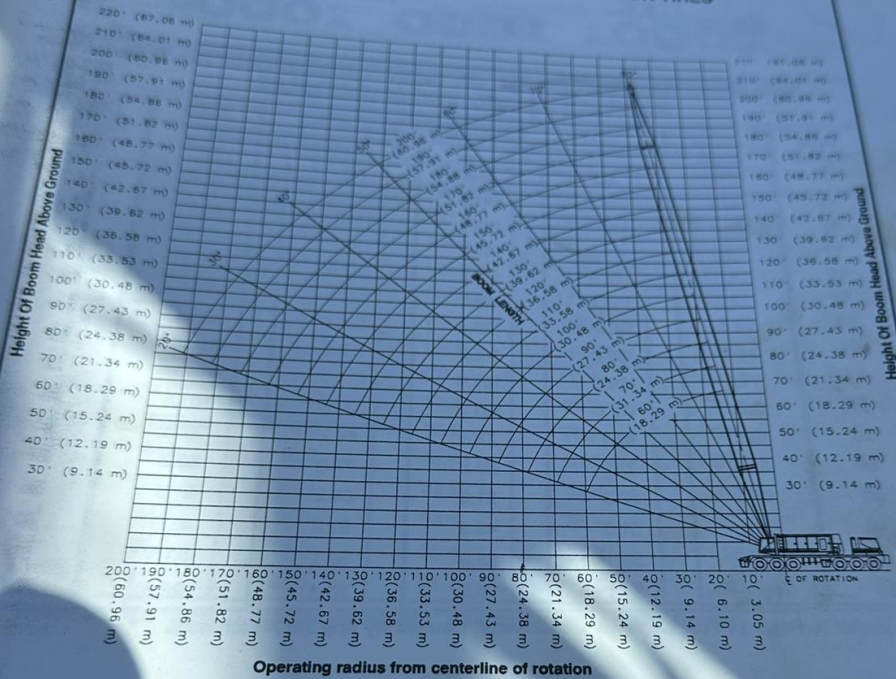
60 Ft (18.3 m) Open Throat Tube Boom						
Load Radius (ft)	Boom Angle (deg)	Counterweight Combinations				Load Radius (ft)
		Static		Dynamic (1.6 km/h)		
		AB	A+A	AB	A+A	
12	81.5					12
13	80.6	186.7	191.6	140.9	148.7	13
14	79.6	181.2	172.8	136.5	144.3	14
15	78.6	175.8	157.2	132.4	140.0	15
16	77.7	166.3	144.2	128.6	135.9	16
17	76.7	153.5	133.1	124.9	132.1	17
18	75.7	142.6	123.4	121.4	123.4	18
19	74.7	133.0	115.0	118.2	115.0	19
20	73.7	124.5	107.8	115.0	107.8	20
25	68.7	117.0	101.3	112.0	101.3	25
30	63.4	89.7	77.3	89.7	77.3	30
35	58.0	72.3	62.2	72.3	62.2	35
40	52.1	60.2	51.6	60.2	51.6	40
50	38.7	39.1	43.9	51.3	43.9	50
60	18.7	31.1	33.3	39.1	33.3	60
			26.3	31.1	26.3	

Note: Refer To Page 14 For "Capacity Deductions" Caused By Any Jib Attachment

Note: Refer To Page 14 For "Capacity Deductions" Caused By Any Jlb Attachment.

WORKING RANGE DIAGRAM

60' TO 200' (18.29 m TO 60.96 m) MAIN BOOM ON TIRES



Notes:

1. Boom geometry shown is for unloaded condition and crane standing level on firm supporting surface. Boom deflection, subsequent radius and boom angle change must be accounted for when applying load to hook.
2. Maximum and minimum boom angles are equal to the values listed in the capacity chart for each boom length.

Working Range Diagram

CD01276



Main Boom Capacities (Kips) – On Outriggers
330 Ft (100.6 m) Open Throat Tube Boom

Boom Capacities (Kips) – On Outriggers 330 Ft (100.6 m) Open Throat Tube Boom										
Load Radius (ft)	Boom Angle (deg)	Counterweight Combinations								Load Radius (ft)
		Over Rear				360°				
		AB	A+A	AB+A	AB+AB	AB	A+A	AB+A	AB+AB	
50	81.8	PROHIBITED			32.9	PROHIBITED			32.9	50
60	80.1				32.0				32.0	60
70	78.3				29.6				29.6	70
80	76.5				27.5				27.5	80
90	74.7				25.5				25.5	90
100	72.9				23.6				23.6	100
110	71.1				21.6				21.6	110
120	69.3				20.0				20.0	120
130	67.4				18.5				18.5	130
140	65.5				17.1				17.1	140
150	63.6				15.8				15.8	150
160	61.6				14.7				14.7	160
170	59.6				13.7				13.7	170
180	57.6				12.7				12.7	180
190	55.5				11.8				11.8	190
200	53.4				11.0				11.0	200
210	51.2				10.2				10.2	210
220	48.9				8.9				8.9	220
230	46.6				7.6				7.6	230
240	44.1				6.5				6.5	240
250	41.6	5.4	5.4	250						
260	38.9	4.5	4.5	260						
270	36.0	3.6	3.6	270						
280	33.0	2.8	2.8	280						
290	29.6	2.0	2.0	290						
300	25.9	—	—	300						

Note: Refer To Page 14 For "Capacity Deductions" Caused By Any Jib Attachment.

PROHIBITED

PROHIBITED

Note: Refer To Page 14 For "Capacity Deductions" Caused By Any Jib Attachment.

28P1130



**Main Boom Capacities (Kips) – On Outriggers
320 Ft (97.5 m) Open Throat Tube Boom**

		Counterweight Combinations								
Load Radius (ft)	Boom Angle (deg)	Over Rear				360°				Load Radius (ft)
		AB	A+A	AB+A	AB+AB	AB	A+A	AB+A	AB+AB	
48	81.9	PROHIBITED			39.2	PROHIBITED			39.2	48
50	81.6				39.0				39.0	50
60	79.8				35.1				35.1	60
70	77.9				32.2				32.2	70
80	76.1				29.8				29.8	80
90	74.3				27.6				27.6	90
100	72.4				25.5				25.5	100
110	70.5				23.6				23.6	110
120	68.6				21.8				21.8	120
130	66.6				20.2				20.2	130
140	64.7				18.7				18.7	140
150	62.7				17.3				16.7	150
160	60.7				16.1				14.5	160
170	58.6				14.9				12.5	170
180	56.5				13.9				10.8	180
190	54.3				12.9				9.3	190
200	52.0	12.1	7.9	200						
210	49.7	10.7	6.7	210						
220	47.3	9.4	5.5	220						
230	44.9	8.1	4.5	230						
240	42.3	7.0	3.6	240						
250	39.5	5.9	2.8	250						
260	36.6	5.0	2.0	260						
270	33.5	4.1	—	270						
280	30.1	3.3	—	280						
290	26.3	2.5	—	290						
300	21.9	—	—	300						

PROHIBITED

PROHIBITED

Note: Refer To Page 14 For "Capacity Deductions" Caused By Any Jib Attachment.



Main Boom Capacities (Kips) – On Outriggers
310 Ft (94.5 m) Open Throat Tube Boom

Load Radius (ft)	Boom Angle (deg)	Counterweight Combinations								Load Radius (ft)
		Over Rear				360°				
		AB	A+A	AB+A	AB+AB	AB	A+A	AB+A	AB+AB	
47	81.9									
50	81.3			42.5	42.5			42.5	42.5	47
60	79.4			42.2	42.2			42.2	42.2	50
70	77.5			41.4	41.4			41.4	41.4	60
80	75.6			38.3	38.3			38.3	38.3	70
90	73.7			34.5	34.5			34.5	34.5	80
100	71.8			30.4	30.4			30.4	30.4	90
110	69.8			28.1	28.1			28.1	28.1	100
120	67.9			26.0	26.0			26.0	26.0	110
130	65.8			24.1	24.1			24.1	24.1	120
140	63.8			22.3	22.3			22.3	22.3	130
150	61.7			20.6	20.6			20.6	20.6	140
160	59.6			19.2	19.2			19.2	19.2	150
170	57.4			17.7	17.7			17.7	17.7	160
180	55.2			16.2	16.5			16.5	16.5	170
190	52.9			14.2	15.4			15.4	15.4	180
200	50.6			12.5	14.3			14.3	14.3	190
210	48.1			11.0	12.7			12.7	12.7	200
220	45.6			9.6	11.2			11.2	11.2	210
230	43.0			8.4	9.8			9.8	9.8	220
240	40.2			7.3	8.6			8.6	8.6	230
250	37.2			6.3	7.5			7.5	7.5	240
260	34.1			5.4	6.4			6.4	6.4	250
270	30.6			4.5	5.5			5.5	5.5	260
280	26.7			3.7	4.6			4.6	4.6	270
290	22.3			3.0	3.8			3.8	3.8	280
300	16.8			2.3	3.0			3.0	3.0	290
				—	2.3			—	—	300

Refer To Page 14 For "Capacity Deductions" Caused By Any Jib Attachment.



**Main Boom Capacities (Kips) – On Outriggers
300 Ft (91.4 m) Open Throat Tube Boom**

Load Radius (ft)	Boom Angle (deg)	Counterweight Combinations								Load Radius (ft)
		Over Rear				360°				
		AB	A+A	AB+A	AB+AB	AB	A+A	AB+A	AB+AB	
45	82.0	46.6	PROHIBITED	46.6	46.6	46.6	PROHIBITED	46.6	46.6	45
50	81.0	46.0		46.0	46.0	46.0		46.0	46.0	50
60	79.1	44.8		44.8	44.8	44.8		44.8	44.8	60
70	77.1	41.7		41.7	41.7	41.7		41.7	41.7	70
80	75.2	38.4		38.4	38.4	38.4		38.4	38.4	80
90	73.2	34.5		34.5	34.5	34.5		34.5	34.5	90
100	71.2	30.6		30.6	30.6	30.6		30.6	30.6	100
110	69.1	28.3		28.3	28.3	28.3		28.3	28.3	110
120	67.1	26.2		26.2	26.2	24.2		25.3	26.2	120
130	65.0	24.0		24.2	24.2	20.8		21.8	23.2	130
140	62.9	20.9		22.4	22.4	17.9		18.9	20.1	140
150	60.7	18.3		20.9	20.9	15.5		16.3	17.5	150
160	58.5	16.0		18.7	19.5	13.4		14.2	15.3	160
170	56.2	14.0		16.5	18.1	11.5		12.3	13.3	170
180	53.9	12.2		14.6	16.7	9.9		10.6	11.6	180
190	51.5	10.6		12.9	14.8	8.5		9.1	10.0	190
200	49.0	9.2		11.4	13.2	7.2		7.8	8.7	200
210	46.4	8.0		10.0	11.7	6.0		6.6	7.4	210
220	43.7	6.8		8.8	10.3	5.0		5.6	6.3	220
230	40.9	5.8		7.7	9.1	4.1		4.6	5.3	230
240	37.9	4.9		6.7	7.9	3.2		3.7	4.4	240
250	34.6	4.0		5.7	6.9	2.4		2.9	3.6	250
260	31.1	3.2		4.9	6.0	—		2.2	2.8	260
270	27.2	2.5		4.1	5.1	—		—	2.1	270
280	22.7	—		3.4	4.3	—		—	—	280
290	17.0	—		2.7	3.5	—		—	—	290
300	8.3	—		—	2.8	—		—	—	300

Note: Refer To Page 14 For "Capacity Deductions" Caused By Any Jib Attachment.



Main Boom Capacities (Kips) – On Outriggers
290 Ft (88.4 m) Open Throat Tube Boom

Main Boom Capacities (Kips) – On Outriggers 290 Ft (88.4 m) Open Throat Tube Boom										
Load Radius (ft)	Boom Angle (deg)	Counterweight Combinations								Load Radius (ft)
		Over Rear				360°				
		AB	A+A	AB+A	AB+AB	AB	A+A	AB+A	AB+AB	
44	81.9	50.7								
50	80.7	49.8		50.7	50.7	50.7		50.7		44
60	78.7	48.9		49.8	49.8	49.8		49.8	50.7	50
70	76.7	45.2		48.9	48.9	48.9		48.9	49.8	60
80	74.6	41.8		45.2	45.2	45.2		45.2	48.9	70
90	72.6	38.7		41.8	41.8	41.8		41.8	45.2	80
100	70.5	34.0		38.7	38.7	38.7		38.7	41.8	90
110	68.4	30.9		34.0	34.0	33.6		34.0	38.7	100
120	66.2	28.1		30.9	30.9	28.6		29.8	34.0	110
130	64.1	24.4		28.6	28.6	24.5		25.7	30.9	120
140	61.8	21.3		26.4	26.4	21.2		22.2	27.1	130
150	59.6	18.6		24.5	24.6	18.3		19.2	23.5	140
160	57.3	16.3		21.6	22.8	15.9		16.7	20.5	150
170	54.9	14.3		19.1	21.1	13.8		14.6	17.9	160
180	52.4	12.6		16.9	19.2	11.9		12.7	15.6	170
190	49.9	11.0		15.0	17.2	10.3		11.0	13.7	180
200	47.3	9.6		13.3	15.3	8.9		9.5	11.9	190
210	44.5	8.4		11.8	13.7	7.6		8.2	10.4	200
220	41.6	7.2		10.4	12.2	6.4		7.0	9.1	210
230	38.5	6.2		9.2	10.8	5.4		6.0	7.8	220
240	35.2	5.3		8.1	9.6	4.4		5.0	6.7	230
250	31.7	4.4		7.1	8.4	3.6		4.1	5.7	240
260	27.7	3.6		6.1	7.4	2.8		3.3	4.8	250
270	23.1	2.9		5.3	6.4	2.1		2.6	4.0	260
280	17.3	2.3		4.5	5.6	—		—	3.2	270
290	8.5	—		3.8	4.7	—		—	2.5	280
	—	—		4.0	—	—		—	—	290

Refer To Page 14 For "Capacity Deductions" Caused By Any Jib Attachment.

PROHIBITED

PROHIBITED

Refer To Page 14 For "Capacity Deductions" Caused By Any Jib Attachment.



Main Boom Capacities (Kips) – On Outriggers
280 Ft (85.3 m) Open Throat Tube Boom

Load Radius (ft)	Boom Angle (deg)	Counterweight Combinations								Load Radius (ft)
		Over Rear				360°				
		AB	A+A	AB+A	AB+AB	AB	A+A	AB+A	AB+AB	
43	81.8	55.4	55.4	55.4	55.4	55.4	55.4	55.4	55.4	43
50	80.4	54.7	54.7	54.7	54.7	54.7	54.7	54.7	54.7	50
60	78.3	54.0	54.0	54.0	54.0	54.0	54.0	54.0	54.0	60
70	76.2	49.9	49.9	49.9	49.9	49.9	44.5	49.9	49.9	70
80	74.1	46.2	45.6	46.2	46.2	46.2	36.3	46.2	46.2	80
90	71.9	42.7	37.7	42.7	42.7	39.7	29.7	41.2	42.7	90
100	69.8	37.7	32.3	39.5	39.5	34.0	24.6	35.4	36.5	100
110	67.6	32.9	27.4	36.5	36.6	29.0	20.5	30.2	31.8	110
120	65.3	28.5	23.5	31.5	31.5	24.9	17.3	26.0	27.5	120
130	63.1	24.8	20.2	28.3	29.4	21.5	14.5	22.5	23.9	130
140	60.7	21.7	17.5	24.9	27.2	18.7	12.2	19.6	20.8	140
150	58.4	19.0	15.1	22.0	24.6	16.2	10.2	17.1	18.3	150
160	55.9	16.7	13.1	19.5	22.0	14.1	8.5	14.9	16.0	160
170	53.4	14.7	11.3	17.3	19.7	12.3	7.1	13.0	14.1	170
180	50.8	13.0	9.8	15.4	17.6	10.7	5.7	11.4	12.3	180
190	48.1	11.4	8.4	13.7	15.8	9.2	4.6	9.9	10.8	190
200	45.3	10.0	7.1	12.2	14.2	8.0	3.6	8.6	9.4	200
210	42.4	8.7	6.0	10.8	12.6	6.8	2.6	7.4	8.2	210
220	39.2	7.6	5.0	9.6	11.3	5.8	—	6.3	7.1	220
230	35.9	6.6	4.1	8.5	10.1	4.8	—	5.4	6.1	230
240	32.2	5.7	3.3	7.5	8.9	4.0	—	4.5	5.2	240
250	28.2	4.8	2.6	6.5	7.9	3.2	—	3.7	4.4	250
260	23.5	4.0	—	5.7	6.9	2.5	—	3.0	3.6	260
270	17.6	3.3	—	4.9	6.0	—	—	2.3	2.9	270
280	8.6	2.7	—	4.2	5.2	—	—	1.7	2.3	280

Note: Refer To Page 14 For "Capacity Deductions" Caused By Any Jib Attachment.



Main Boom Capacities (Kips) – On Outriggers
270 Ft (57.9 m) Open Throat Tube Boom

Main Boom Capacities (Kips) – On Outriggers 270 Ft (57.9 m) Open Throat Tube Boom										
Load Radius (ft)	Boom Angle (deg)	Counterweight Combinations								Load Radius (ft)
		Over Rear				360°				
		AB	A+A	AB+A	AB+AB	AB	A+A	AB+A	AB+AB	
41	81.9	60.5	60.5	60.5	60.5	60.5	60.5	60.5	60.5	41
50	80.0	59.7	59.7	59.7	59.7	59.7	59.7	59.7	59.7	50
60	77.8	58.6	58.6	58.6	58.6	58.6	57.4	58.6	58.6	60
70	75.7	54.6	54.6	54.6	54.6	54.6	44.8	54.6	54.6	70
80	73.5	50.5	45.9	50.5	50.5	48.2	36.6	49.9	50.5	80
90	71.2	45.0	38.1	46.7	46.7	40.0	30.0	41.5	43.6	90
100	69.0	38.1	32.6	42.8	43.2	34.3	24.9	35.7	36.9	100
110	66.7	33.3	27.8	36.9	39.8	29.3	20.9	30.6	32.2	110
120	64.4	28.8	23.9	32.6	35.6	25.3	17.6	26.4	27.9	120
130	62.0	25.1	20.6	28.6	31.6	21.9	14.9	22.9	24.3	130
140	59.5	22.0	17.9	25.2	28.1	19.0	12.6	20.0	21.2	140
150	57.1	19.4	15.5	22.4	25.1	16.6	10.6	17.5	18.6	150
160	54.5	17.1	13.5	19.9	22.5	14.5	8.9	15.3	16.4	160
170	51.8	15.1	11.7	17.7	20.2	12.7	7.4	13.4	14.4	170
180	49.1	13.3	10.1	15.8	18.1	11.1	6.1	11.8	12.7	180
190	46.2	11.8	8.8	14.1	16.3	9.6	5.0	10.3	11.2	190
200	43.2	10.4	7.5	12.6	14.6	8.3	3.9	9.0	9.8	200
210	40.0	9.1	6.4	11.2	13.1	7.2	3.0	7.8	8.6	210
220	36.6	8.0	5.4	10.0	11.8	6.2	2.2	6.7	7.5	220
230	32.8	7.0	4.5	8.9	10.5	5.2	—	5.8	6.5	230
240	28.7	6.1	3.7	7.9	9.4	4.4	—	4.9	5.6	240
250	23.9	5.2	3.0	6.9	8.4	3.6	—	4.1	4.8	250
260	18.0	4.4	2.3	6.1	7.4	2.9	—	3.4	4.0	260
270	8.8	3.7	—	5.3	6.5	2.3	—	2.7	3.3	270

34 of 50

To Page 14 For "Capacity Deductions" Caused By Any Jib Attachment.

For To Page 14 For "Capacity Deductions" Caused By Any Jib Attachment.



**Main Boom Capacities (Kips) – On Outriggers
260 Ft (79.2 m) Open Throat Tube Boom**

Load Radius (ft)	Boom Angle (deg)	Counterweight Combinations								Load Radius (ft)
		Over Rear				360°				
		AB	A+A	AB+A	AB+AB	AB	A+A	AB+A	AB+AB	
40	81.9	66.1	66.1	66.1	66.1	66.1	66.1	66.1	66.1	40
50	79.6	64.8	64.8	64.8	64.8	64.8	64.8	64.8	64.8	50
60	77.4	64.0	64.0	64.0	64.0	64.0	57.7	64.0	64.0	60
70	75.1	59.6	56.8	59.6	59.6	59.5	45.2	59.6	59.6	70
80	72.8	54.2	46.3	55.2	55.2	48.5	36.9	50.3	52.6	80
90	70.5	45.3	38.4	50.6	51.0	40.4	30.4	41.9	44.0	90
100	68.1	38.5	33.0	43.1	46.0	34.7	25.3	36.0	37.3	100
110	65.7	33.6	28.1	37.2	40.3	29.7	21.3	30.9	32.5	110
120	63.3	29.2	24.2	33.0	36.1	25.6	18.0	26.7	28.2	120
130	60.8	25.5	21.0	29.0	32.1	22.3	15.2	23.3	24.6	130
140	58.2	22.4	18.2	25.6	28.6	19.4	12.9	20.3	21.6	140
150	55.6	19.8	15.9	22.7	25.6	17.0	11.0	17.8	19.0	150
160	52.9	17.5	13.8	20.2	23.0	14.9	9.3	15.7	16.8	160
170	50.1	15.5	12.1	18.1	20.7	13.0	7.8	13.8	14.8	170
180	47.1	13.7	10.5	16.1	18.6	11.4	6.5	12.1	13.1	180
190	44.1	12.2	9.1	14.5	16.8	10.0	5.4	10.7	11.6	190
200	40.8	10.8	7.9	12.9	15.1	8.7	4.3	9.4	10.2	200
210	37.3	9.5	6.8	11.6	13.6	7.6	3.4	8.2	9.0	210
220	33.5	8.4	5.8	10.4	12.2	6.5	2.6	7.1	7.9	220
230	29.3	7.4	4.9	9.2	11.0	5.6	—	6.2	6.9	230
240	24.4	6.4	4.1	8.2	9.9	4.8	—	5.3	6.0	240
250	18.3	5.6	3.3	7.3	8.8	4.0	—	4.5	5.2	250
260	9.0	4.8	2.7	6.5	7.9	3.3	—	3.8	4.4	260

Note: Refer To Page 14 For "Capacity Deductions" Caused By Any Jib Attachment.



Main Boom Capacities (Kips) – On Outriggers
250 Ft (76.2 m) Open Throat Tube Boom

250 Ft (76.2 m) Open Throat Tube Boom										
Load Radius (ft)	Boom Angle (deg)	Counterweight Combinations								Load Radius (ft)
		Over Rear				360°				
		AB	A+A	AB+A	AB+AB	AB	A+A	AB+A	AB+AB	
38	82.0	75.0	75.0	75.0	75.0	75.0	75.0	75.0	75.0	38
40	81.5	75.0	75.0	75.0	75.0	75.0	75.0	75.0	75.0	40
50	79.2	71.2	71.2	71.2	71.2	71.2	71.2	71.2	71.2	50
60	76.9	69.9	69.9	69.9	69.9	69.9	69.9	69.9	69.9	60
70	74.5	64.7	64.7	64.7	64.7	59.8	58.0	61.8	64.6	70
80	72.1	54.5	50.9	53.4	59.8	48.9	45.5	50.6	53.0	80
90	69.7	45.7	38.8	43.5	46.5	40.7	36.7	42.3	44.3	90
100	67.2	38.8	33.3	37.6	40.8	35.0	30.7	36.4	37.6	100
110	64.7	34.0	28.5	33.3	36.6	30.0	25.6	31.3	32.9	110
120	62.1	29.5	24.6	29.3	32.5	26.0	21.6	27.1	28.6	120
130	59.5	25.9	21.3	26.0	29.1	22.6	18.3	23.6	25.0	130
140	56.8	22.8	18.6	23.1	26.1	19.8	15.6	20.7	21.9	140
150	54.0	20.1	16.2	20.6	23.4	17.3	13.3	18.2	19.4	150
160	51.1	17.8	14.2	18.4	21.1	15.2	11.4	16.0	17.1	160
170	48.1	15.8	12.4	16.5	19.1	13.4	9.7	14.2	15.2	170
180	45.0	14.1	10.9	14.8	17.2	11.8	8.2	12.5	13.5	180
190	41.6	12.5	9.5	13.3	15.6	10.4	6.9	11.0	11.9	190
200	38.1	11.1	8.3	12.0	14.1	9.1	5.7	9.7	10.6	200
210	34.2	9.9	7.2	10.7	12.7	8.0	4.7	8.6	9.4	210
220	29.8	8.8	6.2	9.6	11.5	6.9	3.8	7.5	8.3	220
230	24.9	7.8	5.3	8.6	10.3	6.0	3.0	6.5	7.3	230
240	18.7	6.8	4.5	7.7	9.3	5.1	2.2	5.7	6.4	240
250	9.1	6.0	3.7		4.4	-	-	4.9	5.5	250

Refer To Page 14 For "Capacity Deductions" Caused By Any Jib Attachment.

Refer To Page 14 For "Capacity Deductions" Caused By Any Jib Attachment.



**Main Boom Capacities (Kips) – On Outriggers
240 Ft (73.2 m) Open Throat Tube Boom**

240 ft (73.2 m) Oper Throat Tube Boom										
Load Radius (ft)	Boom Angle (deg)	Counterweight Combinations								Load Radius (ft)
		Over Rear				360°				
		AB	A+A	AB+A	AB+AB	AB	A+A	AB+A	AB+AB	
37	81.9	82.9	82.9	82.9	82.9	82.9	82.9	82.9	82.9	37
40	81.2	82.4	82.4	82.4	82.4	82.4	82.4	82.4	82.4	40
50	78.7	80.8	80.8	80.8	80.8	80.8	76.8	80.8	80.8	50
60	76.3	74.8	72.4	74.8	74.8	74.8	58.3	74.8	74.8	60
70	73.8	63.5	57.5	63.5	63.5	60.1	45.8	62.2	63.5	70
80	71.3	54.9	47.0	56.4	56.4	49.2	37.0	51.0	53.3	80
90	68.8	46.1	39.2	50.1	50.1	41.1	31.1	42.7	44.7	90
100	66.2	39.3	33.7	43.9	44.4	35.4	26.0	36.8	38.1	100
110	63.6	34.4	28.9	38.0	40.0	30.5	22.0	31.7	33.3	110
120	60.9	30.0	25.0	33.0	33.0	26.4	18.7	27.5	29.0	120
130	58.1	26.3	21.8	29.7	29.7	23.0	16.0	24.1	25.4	130
140	55.2	23.2	19.0	26.4	26.7	20.2	13.7	21.1	22.4	140
150	52.3	20.6	16.7	23.5	23.7	17.8	11.8	18.6	19.8	150
160	49.2	18.3	14.7	21.1	21.3	15.7	10.1	16.5	17.6	160
170	46.0	16.3	12.9	18.9	19.2	13.9	8.6	14.6	15.6	170
180	42.5	14.5	11.4	16.8	16.8	12.3	7.3	13.0	13.9	180
190	38.9	13.0	10.0	15.1	15.1	10.8	6.2	11.5	12.4	190
200	34.9	11.6	8.8	13.6	13.6	9.6	5.2	10.2	11.1	200
210	30.5	10.4	7.7	11.9	11.9	8.4	4.3	9.0	9.8	210
220	25.4	9.3	6.7	10.4	10.4	7.4	3.4	8.0	8.7	220
230	19.1	8.2	5.8	9.4	9.4	6.5	2.7	7.0	7.8	230
240	9.3	7.3	5.0	8.0	8.0	5.6	2.0	6.2	6.9	240

Note: Refer To Page 14 For "Capacity Deductions" Caused By Any Jib Attachment.



Main Boom Capacities (Kips) – On Outriggers
230 Ft (70.1 m) Open Throat Tube Boom

Capacities (Kips) - On Outriggers 230 Ft (70.1 m) Open Throat Tube Boom										
Load Radius (ft)	Boom Angle (deg)	Counterweight Combinations								Load Radius (ft)
		Over Rear				360°				
		AB	A+A	AB+A	AB+AB	AB	A+A	AB+A	AB+AB	
36	81.8	91.0	91.0	91.0	91.0	91.0	91.0	91.0	91.0	36
40	80.8	90.5	90.5	90.5	90.5	90.5	90.5	90.5	90.5	40
50	78.3	87.1	87.1	87.1	87.1	87.1	87.1	87.1	87.1	50
60	75.7	79.4	72.7	79.4	79.4	75.4	77.1	77.8	79.4	60
70	73.1	67.1	57.8	67.5	67.5	60.5	58.6	62.5	65.3	70
80	70.5	55.2	47.3	59.9	59.9	49.6	46.2	51.3	53.7	80
90	67.8	46.4	39.5	51.7	53.9	41.5	37.4	43.0	45.1	90
100	65.1	39.6	34.0	44.3	47.6	35.8	26.4	37.1	38.4	100
110	62.3	34.7	29.2	38.4	41.9	30.8	22.4	32.0	33.6	110
120	59.5	30.3	25.3	34.1	37.1	26.8	19.1	27.9	29.3	120
130	56.5	26.7	22.1	30.1	33.6	23.4	16.4	24.4	25.8	130
140	53.5	23.6	19.4	26.8	30.1	20.6	14.1	21.5	22.7	140
150	50.3	20.9	17.1	23.9	27.1	18.2	12.2	19.0	20.2	150
160	47.0	18.7	15.0	21.4	24.5	16.1	10.5	16.9	17.9	160
170	43.5	16.7	13.3	19.3	22.2	14.2	9.0	15.0	16.0	170
180	39.8	14.9	11.7	17.4	20.1	12.6	7.7	13.3	14.3	180
190	35.7	13.4	10.4	15.7	18.3	11.2	6.6	11.9	12.8	190
200	31.2	12.0	9.1	14.2	16.7	9.9	5.5	10.6	11.4	200
210	25.9	10.7	8.0	12.8	15.1	8.8	4.6	9.4	10.2	210
220	19.5	9.6	7.1	11.6	13.6	7.8	3.8	8.4	9.1	220
230	9.5	8.6	6.2	10.5	12.1	6.9	3.1	7.4	8.1	230

Refer To Page 14 For "Capacity Deductions" Caused By Any Jib Attachment.

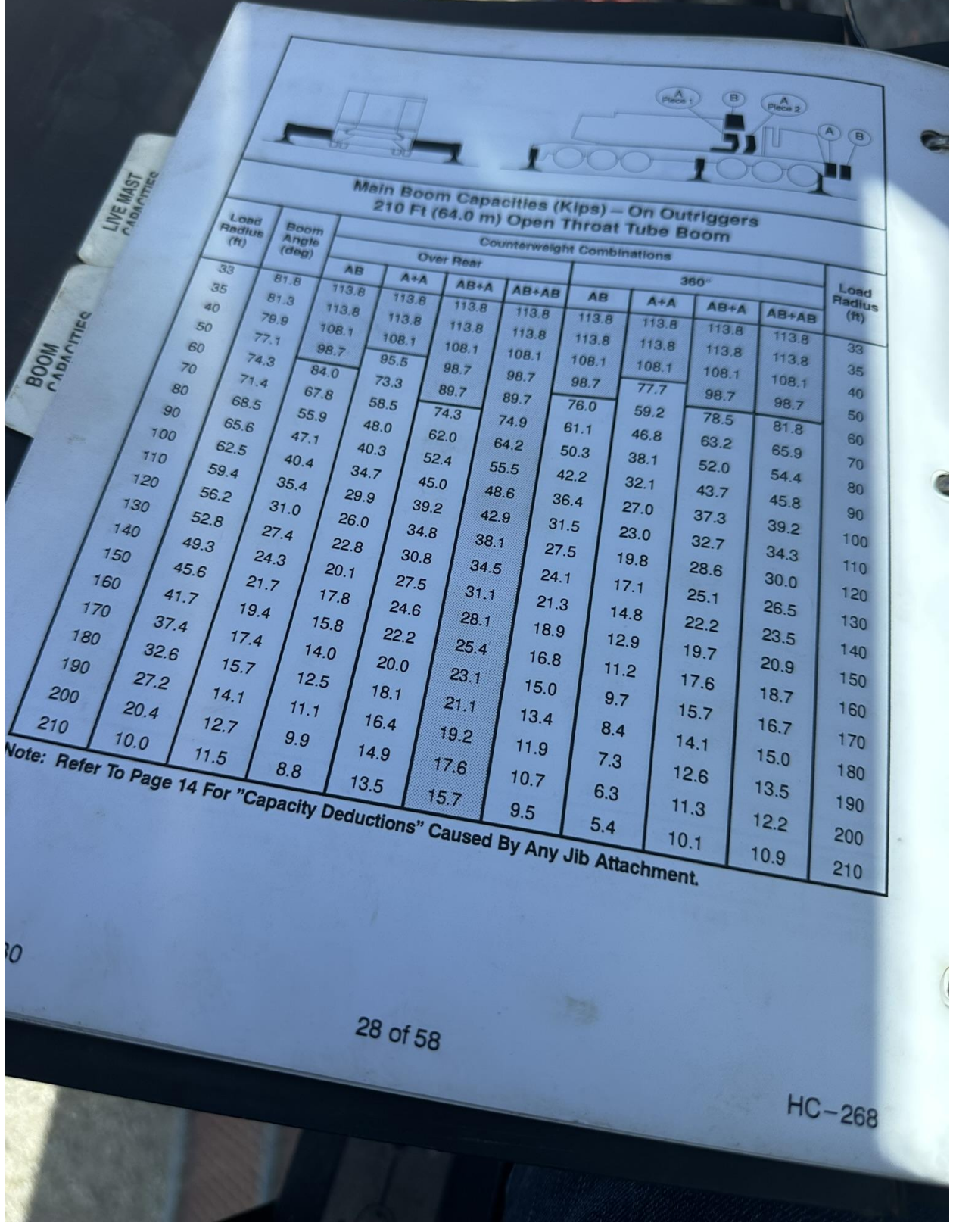
Refer To Page 14 For "Capacity Deductions" Caused By Any Jib Attachment.



**Main Boom Capacities (Kips) – On Outriggers
220 Ft (67.1 m) Open Throat Tube Boom**

220 Ft (67.1 m) Open Throat Tube Boom											
Load Radius (ft)	Boom Angle (deg)	Counterweight Combinations								Load Radius (ft)	
		Over Rear				360°					
		AB	A+A	AB+A	AB+AB	AB	A+A	AB+A	AB+AB		
34	81.9	100.7	100.7	100.7	100.7	100.7	100.7	100.7	100.7	34	
35	81.7	100.7	100.7	100.7	100.7	100.7	100.7	100.7	100.7	35	
40	80.4	100.1	100.1	100.1	100.1	100.1	100.1	100.1	100.1	40	
50	77.7	92.6	92.6	92.6	92.6	92.6	77.4	92.6	92.6	50	
60	75.0	83.7	73.0	84.5	84.5	75.7	58.9	78.2	81.5	60	
70	72.3	67.4	58.2	71.8	71.8	60.8	46.5	62.8	65.6	70	
80	69.6	55.6	47.7	61.6	63.7	49.9	37.7	51.7	54.0	80	
90	66.8	46.8	39.9	52.0	55.0	41.9	31.7	43.4	45.4	90	
100	63.9	40.0	34.4	44.7	48.1	36.1	26.7	37.0	38.8	100	
110	60.9	35.1	29.6	38.8	42.4	31.2	22.7	32.4	34.0	110	
120	57.9	30.7	25.7	34.5	37.6	27.1	19.5	28.2	29.7	120	
130	54.8	27.0	22.5	30.5	34.1	23.8	16.7	24.8	26.1	130	
140	51.5	23.9	19.7	27.1	30.6	20.9	14.5	21.9	23.1	140	
150	48.1	21.3	17.4	24.3	27.6	18.5	12.5	19.4	20.5	150	
160	44.5	19.0	15.4	21.8	25.0	16.4	10.8	17.2	18.3	160	
170	40.7	17.0	13.6	19.6	22.7	14.6	9.4	15.4	16.4	170	
180	36.5	15.3	12.1	17.7	20.6	13.0	8.1	13.7	14.7	180	
190	31.9	13.7	10.7	16.0	18.8	11.6	6.9	12.3	13.1	190	
200	26.5	12.4	9.5	14.5	17.1	10.3	5.9	10.9	11.8	200	
210	19.9	11.1	8.4	13.2	15.6	9.2	5.0	9.8	10.6	210	
220	9.7	10.0	7.4	12.0	13.8	8.2	4.2	8.7	9.5	220	

Note: Refer To Page 14 For "Capacity Deductions" Caused By Any Jib Attachment.



Main Boom Capacities (Kips) – On Outriggers
210 Ft (64.0 m) Open Throat Tube Boom

BOOM
CAPACITIES

		Counterweight Combinations									Load Radius (ft)	
		Over Rear						360°				
		AB	A+A	AB+A	AB+AB	AB	A+A	AB+A	AB+AB			
33	81.8	113.8	113.8	113.8	113.8	113.8	113.8	113.8	113.8	33		
35	81.3	113.8	113.8	113.8	113.8	113.8	113.8	113.8	113.8	35		
40	79.9	108.1	108.1	108.1	108.1	108.1	108.1	108.1	108.1	40		
50	77.1	98.7	95.5	108.1	108.1	108.1	108.1	108.1	108.1	50		
60	74.3	84.0	73.3	98.7	98.7	98.7	98.7	98.7	98.7	60		
70	71.4	67.8	58.5	89.7	89.7	76.0	77.7	78.5	81.8	70		
80	68.5	55.9	48.0	74.3	74.9	61.1	59.2	63.2	65.9	80		
90	65.6	47.1	40.3	62.0	64.2	50.3	46.8	52.0	54.4	90		
100	62.5	40.4	34.7	52.4	55.5	42.2	38.1	43.7	45.8	100		
110	59.4	35.4	29.9	45.0	48.6	36.4	32.1	37.3	39.2	110		
120	56.2	31.0	26.0	39.2	42.9	31.5	27.0	32.7	34.3	120		
130	52.8	27.4	22.8	34.8	38.1	27.5	23.0	28.6	30.0	130		
140	49.3	24.3	20.1	30.8	34.5	24.1	19.8	25.1	26.5	140		
150	45.6	21.7	17.8	27.5	31.1	21.3	17.1	22.2	23.5	150		
160	41.7	19.4	15.8	24.6	28.1	18.9	14.8	19.7	20.9	160		
170	37.4	17.4	14.0	22.2	25.4	16.8	12.9	17.6	18.7	170		
180	32.6	15.7	12.5	20.0	23.1	15.0	11.2	15.7	16.7	180		
190	27.2	14.1	11.1	18.1	21.1	13.4	9.7	14.1	15.0	190		
200	20.4	12.7	9.9	16.4	19.2	11.9	8.4	12.6	13.5	200		
210	10.0	11.5	8.8	14.9	17.6	10.7	7.3	11.3	12.2	210		
			13.5	15.7	9.5	6.3	5.4	10.1	10.9	210		

Note: Refer To Page 14 For "Capacity Deductions" Caused By Any Jib Attachment.

Note: Refer To Page 14 For "Capacity Deductions" Caused By Any Jib Attachment.




**Main Boom Capacities (Kips) – On Outriggers
200 Ft (61.0 m) Open Throat Tube Boom**

200 FT (61.0 m) Open Throat Tube Boom										
Load Radius (ft)	Boom Angle (deg)	Counterweight Combinations								Load Radius (ft)
		Over Rear				360°				
		AB	A+A	AB+A	AB+AB	AB	A+A	AB+A	AB+AB	
32	81.7	124.2	124.2	124.2	124.2	124.2	124.2	124.2	124.2	32
35	80.8	122.7	122.7	122.7	122.7	122.7	122.7	122.7	122.7	35
40	79.4	118.1	118.1	118.1	118.1	118.1	110.6	118.1	118.1	40
50	76.5	106.3	95.8	106.3	106.3	99.9	78.0	103.0	106.3	50
60	73.5	84.4	73.6	90.2	90.2	76.3	59.5	78.8	82.2	60
70	70.5	68.1	58.8	74.7	75.4	61.4	47.1	63.5	66.3	70
80	67.4	56.3	48.4	62.3	64.7	50.6	38.4	52.4	54.7	80
90	64.3	47.5	40.6	52.8	56.0	42.6	32.4	44.1	46.1	90
100	61.0	40.7	35.0	45.4	49.1	36.8	27.4	37.7	39.5	100
110	57.7	35.8	30.3	39.5	43.4	31.8	23.4	33.0	34.7	110
120	54.3	31.4	26.4	35.2	38.6	27.8	20.1	28.9	30.4	120
130	50.6	27.7	23.2	31.2	35.0	24.5	17.4	25.5	26.8	130
140	46.8	24.6	20.4	27.8	31.5	21.6	15.2	22.6	23.8	140
150	42.8	22.0	18.1	25.0	28.5	19.2	13.2	20.1	21.2	150
160	38.4	19.7	16.1	22.5	25.9	17.1	11.6	17.9	19.0	160
170	33.5	17.8	14.4	20.3	23.6	15.3	10.1	16.1	17.1	170
180	27.9	16.0	12.8	18.4	21.5	13.7	8.8	14.4	15.4	180
190	20.9	14.5	11.4	16.8	19.7	12.3	7.7	13.0	13.9	190
200	10.2	13.1	10.2	15.3	18.0	11.0	6.6	11.7	12.5	200

"Reductions" Caused By Any Jib Attachment.

Note: Refer To Page 14 For "Capacity Deductions" Caused By Any Jib Attachment.



Main Boom Capacities (Kips) – On Outriggers
190 Ft (57.9 m) Open Throat Tube Boom

Load Radius (ft)	Boom Angle (deg)	Counterweight Combinations								Load Radius (ft)
		Over Rear				360°				
		AB	A+A	AB+A	AB+AB	AB	A+A	AB+A	AB+AB	
30	81.9	133.8	133.8	133.8	133.8	133.8	133.8	133.8	133.8	30
35	80.4	130.4	130.4	130.4	130.4	130.4	130.4	130.4	130.4	35
40	78.8	125.5	125.5	125.5	125.5	125.5	125.5	125.5	125.5	40
50	75.7	110.3	96.1	111.4	111.4	100.1	78.3	103.3	107.5	50
60	72.6	84.7	73.9	90.7	90.7	76.7	59.8	79.2	82.5	60
70	69.4	68.4	59.1	75.0	75.9	61.8	47.5	63.8	66.6	70
80	66.1	56.6	48.7	62.6	65.2	50.9	38.8	52.7	55.0	80
90	62.8	47.8	41.0	53.1	56.5	42.9	32.7	44.4	46.5	90
100	59.4	41.1	35.4	45.7	49.6	37.1	27.7	38.1	39.9	100
110	55.8	36.1	30.6	39.9	43.9	32.2	23.7	33.4	35.0	110
120	52.1	31.7	26.7	35.5	39.1	28.1	20.5	29.2	30.7	120
130	48.1	28.1	23.5	31.5	35.5	24.8	17.8	25.8	27.2	130
140	43.9	25.0	20.8	28.2	32.0	22.0	15.5	22.9	24.2	140
150	39.4	22.4	18.5	25.3	29.0	19.6	13.6	20.4	21.6	150
160	34.4	20.1	16.5	22.9	26.4	17.5	11.9	18.3	19.4	160
170	28.6	18.1	14.7	20.7	24.0	15.7	10.4	16.4	17.4	170
180	21.5	16.4	13.2	18.8	22.0	14.1	9.1	14.8	15.7	180
190	10.5	14.8	11.8	17.1	20.1	12.6	8.0	13.3	14.2	190

Note: Refer To Page 14 For "Capacity Deductions" Caused By Any Jib Attachment.

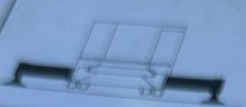


**Main Boom Capacities (Kips) – On Outriggers
180 Ft (54.9 m) Open Throat Tube Boom**

180 Ft (54.9 m) Open Throat Tube Boom										
Load Radius (ft)	Boom Angle (deg)	Counterweight Combinations								Load Radius (ft)
		Over Rear				360°				
		AB	A+A	AB+A	AB+AB	AB	A+A	AB+A	AB+AB	
29	81.7	143.8	143.8	143.8	143.8	143.8	143.8	143.8	143.8	29
30	81.4	142.0	142.0	142.0	142.0	142.0	142.0	142.0	142.0	30
35	79.8	136.7	136.7	136.7	136.7	136.7	136.7	136.7	136.7	35
40	78.2	131.6	126.7	131.6	131.6	131.6	111.0	131.6	131.6	40
50	74.9	110.6	96.4	111.5	111.5	100.4	78.6	103.6	107.8	50
60	71.6	85.0	74.2	91.3	91.3	77.0	60.1	79.5	82.8	60
70	68.2	68.7	59.4	75.4	76.4	62.1	47.8	64.1	66.9	70
80	64.7	56.9	49.0	63.0	65.7	51.3	39.1	53.0	55.4	80
90	61.2	48.2	41.3	53.4	57.0	43.2	33.0	44.8	46.8	90
100	57.5	41.4	35.7	46.1	50.0	37.1	28.0	38.4	40.2	100
110	53.6	36.4	30.9	40.2	44.3	32.5	24.0	33.7	35.3	110
120	49.5	32.0	27.1	35.8	39.6	28.5	20.8	29.6	31.1	120
130	45.2	28.4	23.8	31.9	35.9	25.1	18.1	26.1	27.5	130
140	40.5	25.3	21.1	28.5	32.4	22.3	15.9	23.2	24.5	140
150	35.3	22.7	18.8	25.7	29.4	19.9	13.9	20.8	21.9	150
160	29.4	20.4	16.8	23.2	26.8	17.8	12.2	18.6	19.7	160
170	22.1	18.4	15.0	21.0	24.5	16.0	10.8	16.8	17.8	170
180	10.8	16.7	13.5	19.1	22.4	14.4	9.5	15.1	16.1	180

Note: Refer to Page 14 For "Capacity Reductions"

Note: Refer To Page 14 For "Capacity Deductions" Caused By Any Jib Attachment.



Main Boom Capacities (Kips) – On Outriggers
170 Ft (51.8 m) Open Throat Tube Boom

LIVE CAPACITIES		170 FT (51.8 m) Open Throat Tube Boom										Load Radius (ft)	
		Load Radius (ft)	Boom Angle (deg)	Counterweight Combinations									
				Over Rear				360°					
		AB	A+A	AB+A	AB+AB	AB	A+A	AB+A	AB+AB				
27	81.9	157.0	157.0	157.0	157.0	157.0	157.0	157.0	157.0	27			
30	80.9	153.1	153.1	153.1	153.1	153.1	153.1	153.1	153.1	30			
35	79.2	145.4	145.4	145.4	145.4	145.4	145.4	145.4	145.4	35			
40	77.5	140.0	127.3	140.0	140.0	140.0	137.7	145.4	145.4	40			
50	74.0	110.9	96.7	112.1	112.1	100.7	111.2	140.0	140.0	50			
60	70.5	85.3	74.5	91.8	91.8	77.3	78.8	103.8	108.1	60			
70	66.9	69.0	59.7	75.7	76.9	62.4	60.4	79.8	83.1	70			
80	63.1	57.2	49.3	63.3	66.2	51.6	48.1	64.4	67.2	80			
90	59.3	48.5	41.6	53.8	57.5	43.6	39.4	53.3	55.7	90			
100	55.3	41.8	36.0	46.4	50.5	37.4	33.3	45.1	47.2	100			
110	51.1	36.7	31.3	40.6	44.8	32.8	28.3	38.8	40.6	110			
120	46.6	32.4	27.4	36.1	40.1	28.8	24.4	34.0	35.7	120			
130	41.7	28.7	24.2	32.2	36.3	25.5	21.1	29.9	31.4	130			
140	36.4	25.6	21.5	28.8	32.9	22.6	18.5	26.5	27.8	140			
150	30.3	23.0	19.1	26.0	29.9	20.2	16.2	23.6	24.8	150			
160	22.7	20.7	17.1	23.5	27.2	18.2	14.2	21.1	22.3	160			
170	11.1	18.7	15.4	21.3	24.9	16.3	12.6	19.0	20.0	170			

Note: Refer To Page 14 For "Capacity Deductions" Caused By Any Jib Attachment.

Note: Refer To Page 14 For "Capacity Deductions" Caused By Any Jlb Attachment.



**Main Boom Capacities (Kips) – On Outriggers
160 Ft (48.8 m) Open Throat Tube Boom**

160 Ft (48.8 m) Open Throat Tube Boom										
Load Radius (ft)	Boom Angle (deg)	Counterweight Combinations								Load Radius (ft)
		Over Rear				360°				
		AB	A+A	AB+A	AB+AB	AB	A+A	AB+A	AB+AB	
26	81.8	170.9	170.9	170.9	170.9	170.9	170.9	170.9	170.9	26
30	80.3	164.5	164.5	164.5	164.5	164.5	164.5	164.5	164.5	30
35	78.5	158.3	147.6	158.3	158.3	158.3	137.9	158.3	158.3	35
40	76.7	143.5	127.8	143.5	143.5	140.8	111.4	143.5	143.5	40
50	73.0	111.1	96.9	112.6	112.6	101.0	79.1	104.1	108.3	50
60	69.2	85.6	74.4	92.3	92.3	77.6	60.7	80.1	83.4	60
70	65.3	69.3	60.0	76.0	77.4	62.7	48.4	64.7	67.5	70
80	61.3	57.6	49.7	63.6	66.6	51.9	39.7	53.7	56.0	80
90	57.1	48.8	42.0	54.1	57.9	43.9	33.6	45.4	47.5	90
100	52.8	42.1	36.3	46.8	51.0	37.7	28.6	39.1	40.9	100
110	48.1	37.0	31.6	40.9	45.3	33.1	24.7	34.3	36.0	110
120	43.1	32.7	27.7	36.5	40.5	29.1	21.4	30.2	31.7	120
130	37.6	29.0	24.5	32.5	36.8	25.8	18.8	26.8	28.1	130
140	31.2	26.0	21.8	29.2	33.3	23.0	16.5	23.9	25.1	140
150	23.4	23.3	19.4	26.3	30.3	20.5	14.6	21.4	22.6	150
160	11.4	21.0	17.4	23.8	27.6	18.4	12.9	19.2	20.3	160

Note: Refer To Page 14 For "Capacity Deductions" Caused By Any Jib Attachment.



Main Boom Capacities (Kips) - On Outriggers
150 Ft (45.7 m) Open Throat Tube Boom

150 Ft (45.7 m) Open Throat Tube Boom										
Load Radius (ft)	Boom Angle (deg)	Counterweight Combinations								Load Radius (ft)
		Over Rear				360°				
		AB	A+A	AB+A	AB+AB	AB	A+A	AB+A	AB+AB	
25	81.6	185.6	185.6	185.6	185.6	185.6	185.6	185.6	185.6	25
30	79.7	174.0	174.0	174.0	174.0	174.0	174.0	174.0	174.0	30
35	77.7	165.3	165.3	165.3	165.3	165.3	165.3	165.3	165.3	35
40	75.8	144.0	144.0	144.0	144.0	144.0	144.0	144.0	144.0	40
50	71.8	111.4	111.4	111.4	111.4	111.4	111.4	111.4	111.4	50
60	67.7	85.9	85.9	85.9	85.9	85.9	85.9	85.9	85.9	60
70	63.5	69.6	69.6	69.6	69.6	69.6	69.6	69.6	69.6	70
80	59.2	57.9	57.9	57.9	57.9	57.9	57.9	57.9	57.9	80
90	54.6	49.2	49.2	49.2	49.2	49.2	49.2	49.2	49.2	90
100	49.8	42.4	42.4	42.4	42.4	42.4	42.4	42.4	42.4	100
110	44.6	37.3	37.3	37.3	37.3	37.3	37.3	37.3	37.3	110
120	38.8	33.0	33.0	33.0	33.0	33.0	33.0	33.0	33.0	120
130	32.3	29.3	29.3	29.3	29.3	29.3	29.3	29.3	29.3	130
140	24.2	26.2	26.2	26.2	26.2	26.2	26.2	26.2	26.2	140
150	11.8	23.6	23.6	23.6	23.6	23.6	23.6	23.6	23.6	150

4500

60000

Note: Refer To Page 14 For "Capacity Deductions" Caused By Any Jlb Attachment.

Note: Refer To Page 14 For "Capacity Deductions" Caused By Any Jib Attachment.

4500
 60000
 64500

6.3500
 X .10
 50




**Main Boom Capacities (Kips) – On Outriggers
140 Ft (42.7 m) Open Throat Tube Boom**

140 Ft (42.7 m) Open Throat Tube Boom										
Load Radius (ft)	Boom Angle (deg)	Counterweight Combinations								Load Radius (ft)
		Over Rear				360°				
		AB	A+A	AB+A	AB+AB	AB	A+A	AB+A	AB+AB	
23	81.9	201.4	201.4	201.4	PROHIBITED	201.4	201.4	201.4	PROHIBITED	23
25	81.0	196.3	196.3	196.3		196.3	196.3	196.3		25
30	79.0	186.5	174.6	186.5		186.5	174.6	186.5		30
35	76.9	166.2	148.7	166.2		166.2	138.2	166.2		35
40	74.7	144.6	128.9	144.6		141.2	111.8	144.6		40
50	70.5	111.6	97.4	113.7		101.5	79.6	104.6		50
60	66.0	86.2	75.0	93.3		78.2	61.2	80.7		60
70	61.5	69.9	60.6	76.7		63.2	48.9	65.3		70
80	56.7	58.2	50.3	64.2		52.5	40.3	54.3		80
90	51.7	49.5	42.6	54.7		44.5	34.2	46.0		90
100	46.2	42.7	36.9	47.4	PROHIBITED	38.4	29.2	39.7	PROHIBITED	100
110	40.3	37.4	32.1	41.6		33.7	25.3	34.9		110
120	33.4	33.2	28.3	37.0		29.7	22.0	30.8		120
130	25.0	29.6	25.0	33.1		26.3	19.3	27.3		130
140	12.2	26.5	22.3	29.7		23.5	17.0	24.4		140

Note: Refer To Page 14 For "Capacity Deductions" Caused By Any Jib Attachment.

BOOM CAPACITIES

LIVE MAST CAPACITIES



Main Boom Capacities (Kips) – On Outriggers
130 Ft (39.6 m) Open Throat Tube Boom

Load Radius (ft)	Boom Angle (deg)	Counterweight Combinations				360°				Load Radius (ft)
		AB	A+A	AB+A	AB+AB	AB	A+A	AB+A	AB+AB	
22	51.7	218.4	218.4	218.4	218.4	218.4	218.4	218.4	22	
25	80.3	207.5	207.5	207.5	207.5	207.5	207.5	207.5	25	
30	78.1	195.7	175.2	195.7	195.7	175.2	195.7	195.7	30	
35	75.8	166.8	149.3	166.8	166.8	138.4	166.8	166.8	35	
40	73.5	145.1	129.5	145.1	145.1	112.0	145.1	145.1	40	
50	68.9	111.9	97.7	114.2	114.2	79.8	104.8	104.8	50	
60	64.1	86.5	75.2	93.7	93.7	61.4	80.9	80.9	60	
70	59.1	70.1	60.9	76.9	76.9	49.2	65.6	65.6	70	
80	53.8	58.4	50.5	64.5	64.5	40.6	54.5	54.5	80	
90	48.1	49.7	42.8	55.0	55.0	34.4	46.3	46.3	90	
100	41.9	43.0	37.1	47.7	47.7	29.5	40.0	40.0	100	
110	34.7	37.7	32.4	41.9	41.9	25.5	35.2	35.2	110	
120	26.0	33.5	28.5	37.3	37.3	22.3	31.0	31.0	120	
130	12.7	29.8	25.3	33.3	33.3	19.5	27.6	27.6	130	

Note: Refer To Page 14 For "Capacity Deductions" Caused By Any Jib Attachment.

20 of 58

HC-268



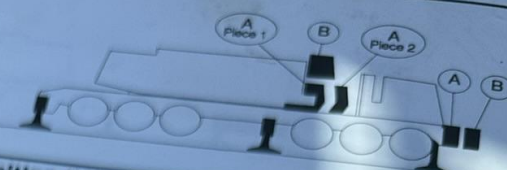
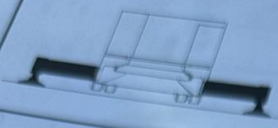
**Main Boom Capacities (Kips) – On Outriggers
120 Ft (36.6 m) Open Throat Tube Boom**

Load Radius (ft)	Boom Angle (deg)	Counterweight Combinations								Load Radius (ft)
		Over Rear				360°				
		AB	A+A	AB+A	AB+AB	AB	A+A	AB+A	AB+AB	
20	81.9	237.0	237.0	237.0	PROHIBITED	237.0	237.0	237.0	PROHIBITED	20
25	79.5	222.2	212.1	222.2		222.2	212.1	222.2		25
30	77.1	196.3	175.8	196.3		196.3	175.8	196.3		30
35	74.6	167.4	149.5	167.4		167.4	138.5	167.4		35
40	72.1	145.6	129.9	145.6		141.6	111.8	145.6		40
50	67.0	112.1	97.9	114.7		101.9	80.0	105.0		50
60	61.7	86.7	75.5	94.2		78.7	61.6	81.2		60
70	56.2	70.4	61.1	77.2		63.7	49.4	65.8		70
80	50.2	58.7	50.8	64.7		53.0	40.8	54.8		80
90	43.6	50.0	43.1	55.3		45.1	34.7	46.6		90
100	36.2	43.3	37.4	47.9		38.9	29.7	40.3		100
110	27.1	37.9	32.6	42.1		34.2	25.7	35.4		110
120	13.2	33.7	28.7	37.5	30.1	22.4	31.2	120		

Note: Refer To Page 14 For "Capacity Deductions" Caused By Any Jib Attachment.

BOOM CAPACITIES

LIVE MAST CAPACITIES



**Main Boom Capacities (Kips) – On Outriggers
110 Ft (33.5 m) Open Throat Tube Boom**

Capacities (Kips) – On Outriggers 110 Ft (33.5 m) Open Throat Tube Boom										
Load Radius (ft)	Boom Angle (deg)	Counterweight Combinations								Load Radius (ft)
		Over Rear				360°				
		AB	A+A	AB+A	AB+AB	AB	A+A	AB+A	AB+AB	
19	81.7	255.1	255.1	255.1	PROHIBITED	255.1	255.1	255.1	PROHIBITED	19
20	81.2	252.0	252.0	252.0		252.0	252.0	252.0		20
25	78.6	236.2	212.7	236.2		236.2	212.7	236.2		25
30	75.9	196.9	176.4	196.9		196.9	176.4	196.9		30
35	73.2	167.9	150.0	167.9		167.9	138.5	167.9		35
40	70.4	146.1	130.4	146.1		141.7	112.0	146.0		40
50	64.8	112.0	98.1	115.1		102.1	80.2	105.2		50
60	58.9	86.9	75.7	94.6		78.9	61.8	81.4		60
70	52.6	70.6	61.3	77.4		63.9	49.6	66.0		70
80	45.7	58.9	51.0	64.9		53.2	41.1	55.0		80
90	37.9	50.2	43.3	55.5		45.3	34.8	46.8		90
100	28.3	43.5	37.4	48.2	39.1	29.9	40.5	100		
110	13.8	38.1	32.7	42.3	34.3	25.9	35.5	110		

Note: Refer To Page 14 For "Capacity Deductions" Caused By Any Jib Attachment.

Note: Refer To Page 14 For "Capacity Deductions" Caused By Any Jib Attachment.



Main Boom Capacities (Kips) – On Outriggers
100 Ft (30.5 m) Open Throat Tube Boom

Main Boom Capacities (Rops)										
100 Ft (30.5 m) Open Throat Tube Boom										
Load Radius (ft)	Boom Angle (deg)	Counterweight Combinations								Load Radius (ft)
		Over Rear				360°				
		AB	A+A	AB+A	AB+AB	AB	A+A	AB+A	AB+AB	
18	81.5	278.4	278.4	278.4	PROHIBITED	278.4	278.4	278.4	PROHIBITED	18
19	80.9	271.5	271.5	271.5		271.5	271.5	271.5		19
20	80.3	271.5	267.3	271.5		271.5	266.7	271.5		20
25	77.4	238.0	213.3	238.0		238.0	213.3	238.0		25
30	74.4	197.5	176.9	197.5		197.5	176.9	197.5		30
35	71.4	168.4	150.5	168.4		168.4	138.6	168.4		35
40	68.4	146.6	130.9	146.6		141.8	112.1	146.1		40
50	62.1	112.1	98.2	115.5		102.2	80.4	105.4		50
60	55.4	87.1	75.9	95.0		79.1	62.0	81.5		60
70	48.1	70.7	61.5	77.6		64.1	49.8	66.2		70
80	39.8	59.1	51.2	65.1	53.4	41.2	55.2	80		
90	29.7	50.4	43.5	55.6	45.5	35.0	47.0	90		
100	14.5	43.7	37.5	48.3	39.3	29.9	40.6	100		

Note: Refer To Page 14 For "Capacity Deductions" Caused By Any Jib Attachment.

LIVE MAST CAPACITIES
BOOM CAPACITIES



**Main Boom Capacities (Kips) – On Outriggers
90 Ft (27.4 m) Open Throat Tube Boom**

Capacities (Kips) – On Outriggers										
90 Ft (27.4 m) Open Throat Tube Boom										
Load Radius (ft)	Boom Angle (deg)	Counterweight Combinations								Load Radius (ft)
		Over Rear				360°				
		AB	A+A	AB+A	AB+AB	AB	A+A	AB+A	AB+AB	
16	81.8	307.7	307.7	307.7	PROHIBITED	307.7	307.7	307.7	PROHIBITED	16
17	81.2	300.0	300.0	300.0		300.0	300.0	300.0		17
18	80.5	300.0	298.2	300.0		300.0	295.9	300.0		18
19	79.9	292.5	282.3	292.5		292.5	280.8	292.5		19
20	79.2	285.2	268.1	285.2		285.2	267.4	285.2		20
25	76.0	238.6	213.9	238.6		238.6	213.9	238.6		25
30	72.7	198.0	177.3	198.0		198.0	177.3	198.0		30
35	69.3	168.9	150.9	168.9		168.9	138.6	168.9		35
40	65.8	147.0	131.3	147.0		141.9	112.1	146.1		40
50	58.6	98.3	76.0	95.3		79.2	62.1	105.4		50
60	50.8	87.2	61.6	77.8	64.2	49.9	81.7	60		
70	42.0	70.9	51.3	65.2	53.5	41.3	66.3	70		
80	31.4	59.2	43.6	55.7	45.5	35.0	55.3	80		
90	15.2	50.5					47.1	90		

Note: Refer To Page 14 For "Capacity Deductions" Caused By Any Jib Attachment.

Note: Refer To Page 14 For "Capacity Deductions" Caused By Any Jib Attachment.



**Main Boom Capacities (Kips) – On Outriggers
80 Ft (24.4 m) Open Throat Tube Boom**

80 Ft (24.4 m) Open Throat Tube Boom										Load Radius (ft)
Load Radius (ft)	Boom Angle (deg)	Counterweight Combinations								
		Over Rear				360°				
		AB	A+A	AB+A	AB+AB	AB	A+A	AB+A	AB+AB	
15	81.5	321.8	321.8	PROHIBITED		321.8	321.8	PROHIBITED		15
16	80.8	313.7	313.7			313.7	313.7			16
17	80.0	305.9	305.9			305.9	305.9			17
18	79.3	302.1	297.6			302.1	295.3			18
19	78.6	294.5	281.8			294.5	280.1			19
20	77.9	290.8	267.5			290.8	266.8			20
25	74.2	238.1	213.3			238.1	213.3			25
30	70.4	197.6	176.9			197.6	176.9			30
35	66.6	168.5	150.6			168.5	137.5			35
40	62.6	146.7	130.9			141.0	111.5			40
50	54.2	111.9	97.7			101.7	79.9			50
60	44.7	86.8	75.6			78.8	61.7			60
70	33.3	70.6	61.3			63.9	49.6			70
80	16.2	58.9	51.0			53.3	41.1			80

Note: Refer To Page 14 For "Capacity Deductions" Caused By Any Jib Attachment.

LIVE MAST
CAPACITIES

BOOM
CAPACITIES



**Main Boom Capacities (Kips) – On Outriggers
70 Ft (21.3 m) Open Throat Tube Boom**

Capacities (Kips) – On Outriggers 70 Ft (21.3 m) Open Throat Tube Boom											
Load Radius (ft)	Boom Angle (deg)	Counterweight Combinations								Load Radius (ft)	
		Over Rear				360°					
		AB	A+A	AB+A	AB+AB	AB	A+A	AB+A	AB+AB		
13	81.9	357.7	357.7	PROHIBITED	PROHIBITED	357.7	357.7	PROHIBITED	PROHIBITED	13	
14	81.1	348.8	348.8			348.8	348.8			14	
15	80.3	344.4	344.4			344.4	342.0			15	
16	79.4	335.8	335.4			335.8	328.1			16	
17	78.6	327.4	315.6			327.4	313.3			17	
18	77.8	323.3	298.2			323.3	295.9			18	
19	76.9	314.8	282.3			314.8	280.7			19	
20	76.1	299.1	268.0			299.1	267.3			20	
25	71.8	238.6	213.7			238.6	213.7			25	
30	67.5	197.9	177.2			197.9	177.2			30	
35	63.0	168.8	150.9			168.8	137.3			35	
40	58.3	146.9	131.2			140.9	111.3			40	
50	48.0	111.8	97.6			101.7	79.8			50	
60	35.7	86.8	75.6			78.8	61.6			60	
70	17.3	70.5	61.2			63.8	49.5			70	

Note: Refer To Page 14 For "Capacity Deductions" Caused By Any Jib Attachment.

Note: Refer To Page 14 For "Capacity Deductions" Caused By Any Jib Attachment.



**Main Boom Capacities (Kips) – On Outriggers
60 Ft (18.3 m) Open Throat Tube Boom**

Counterweight Combinations										Load Radius (ft)
Load Radius (ft)	Boom Angle (deg)	Over Rear				360°				
		AB	A+A	AB+A	AB+AB	AB	A+A	AB+A	AB+AB	
12	81.5	500.0	445.5	PROHIBITED		450.0	392.7	PROHIBITED		12
13	80.6	432.4	412.8			432.4	374.7			13
14	79.6	413.3	383.6			413.3	358.1			14
15	78.6	395.9	358.3			395.9	342.8			15
16	77.6	374.5	336.0			374.5	328.9			16
17	76.7	352.5	316.1			352.5	313.8			17
18	75.7	333.0	298.6			333.0	296.3			18
19	74.7	315.3	282.7			315.3	281.1			19
20	73.7	299.5	268.4			299.5	267.7			20
25	68.7	238.8	214.0			238.8	214.0			25
30	63.4	198.2	177.4			198.2	177.4			30
35	58.0	169.0	151.0			169.0	136.9			35
40	52.1	147.1	131.3			140.6	111.0			40
	38.7	111.6	97.4			101.4	79.6			50
	18.7	86.6	75.4			78.6	61.3			60

Refer To Page 14 For "Capacity Deductions" Caused By Any Jib Attachment.

ON TIRE

JIB

CAPACITY DEDUCTIONS FOR LIFTING OFF MAIN BOOM HOOK WITH JIB INSTALLED

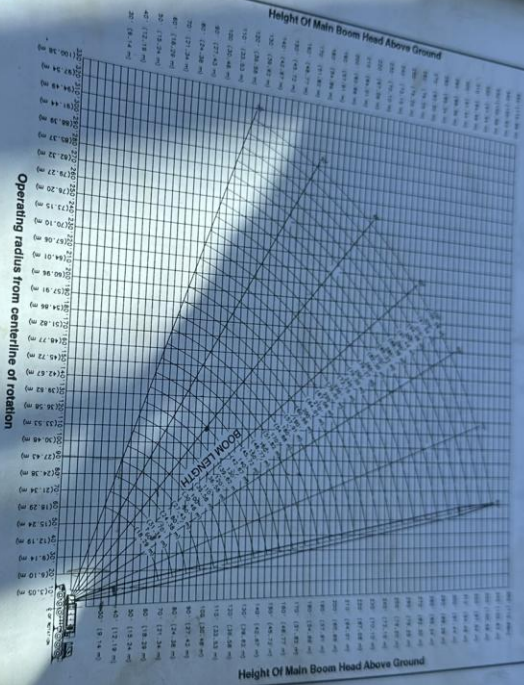
When using main boom hook while jib is attached, reduce boom capacities by the values in the following chart:

Jib Length	Capacity Deduction
30' (9.14 m)	2,600 lb (1.2 m tons)
50' (15.24 m)	3,400 lb (1.5 m tons)
70' (21.34 m)	4,200 lb (1.9 m tons)
90' (27.43 m)	5,000 lb (2.3 m tons)

LIVE MAST
CAPACITIES

WORKING RANGE DIAGRAM

60' TO 330' (18.29 m TO 100.58 m) MAIN BOOM ON OUTRIGGERS



Operating range from centerline of rotation

Notes:

1. Boom geometry shown is for unloaded condition and crane standing level on firm supporting surface. Boom deflection, subsequent radius and boom angle change must be accounted for when applying load to hook.
2. Maximum and minimum boom angles are equal to the values listed in the capacity chart for each boom length.

Working Range Diagram

CD01278

LIVE MAST
CAPACITIES

CRANE ASSEMBLY COMPONENT WEIGHTS

COMPONENT	WEIGHT	
	POUNDS	METRIC TONS
1. 30 ft (9.1 m) Base Section	4,124	1.9
2. Boom Extensions	78 lb/ft	116 kg/m
3. 30 ft (9.1 m) Top Section With 6 Sheave Head Machinery	4,850	2.2
4. Outrigger Assembly Front	12,760	5.8
5. Outrigger Assembly Rear	12,760	5.8
6. Upper Counterweights	12,760	5.8
• Counterweight "A"		
Piece 1	30,000	13.6
Piece 2	17,000	7.7
• Counterweight "B"		
• Counterweight "AB"	38,000	17.2
7. Bumper Counterweights	85,000	38.6
• Counterweight "A"		
• Counterweight "B"	11,400	5.2
• Counterweight "AB"	15,300	6.9
	26,700	12.1

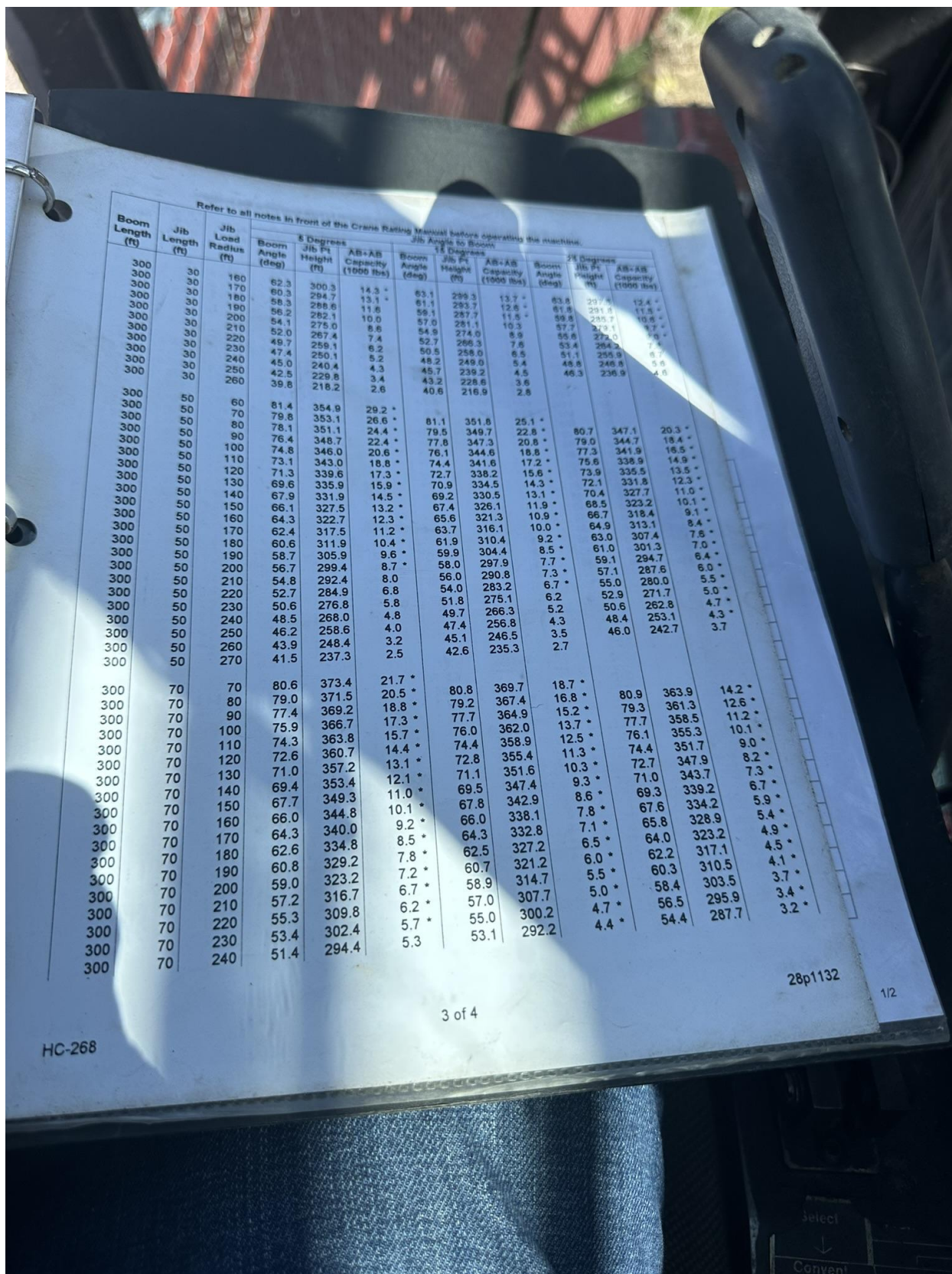
10 380
20 1560
30 2340
40 3120
50 3900

ON TIRE
CAPACITY

Refer to all notes in front of the Crane Rating Manual before operating the machine.

Boom Length (ft)	Jib Length (ft)	Jib Load Radius (ft)	5 Degrees			15 Degrees			25 Degrees		
			Boom Angle (deg)	Jib Pt Height (ft)	AB+AB Capacity (1000 lbs)	Boom Angle (deg)	Jib Pt Height (ft)	AB+AB Capacity (1000 lbs)	Boom Angle (deg)	Jib Pt Height (ft)	AB+AB Capacity (1000 lbs)
300	70	250	45.8	285.9	4.4	51.0	283.8	4.0	52.4	279.0	2.9
300	70	260	47.3	276.7	3.8	48.9	274.3	3.8	50.2	269.5	2.7
300	70	270	45.1	266.8	2.9	46.7	264.3	3.3	48.0	259.3	2.5
300	70	280	42.5	256.1	2.2	44.5	253.5	2.6	45.7	248.3	2.3
300	80	70	61.3	393.7	13.9	80.6	387.6	12.2	81.1	380.8	9.4
300	80	80	79.8	391.8	13.6	79.0	385.1	11.9	79.6	378.1	8.3
300	80	90	78.4	389.7	13.4	77.5	382.4	10.7	78.0	375.0	7.4
300	80	100	76.9	387.3	13.2	76.0	379.4	9.7	74.9	371.7	6.6
300	80	110	75.3	384.6	12.6	74.4	376.1	8.8	73.3	368.1	5.9
300	80	120	73.8	381.6	11.5	72.9	372.5	7.9	71.7	364.1	5.2
300	80	130	72.3	378.4	10.5	71.3	368.6	7.2	70.0	359.8	4.6
300	80	140	70.7	374.8	9.7	69.7	364.4	6.6	68.4	355.2	4.2
300	80	150	69.2	370.9	8.9	68.1	359.9	5.9	66.7	350.3	3.8
300	80	160	67.6	366.7	8.0	66.5	355.0	5.4	65.0	344.9	3.4
300	80	170	66.0	362.2	7.4	64.8	349.7	4.9	63.2	339.2	3.1
300	80	180	64.3	357.3	6.8	63.1	344.0	4.5	61.5	333.0	2.8
300	80	190	62.7	352.1	6.2	61.4	338.0	4.1	59.7	326.5	2.5
300	80	200	61.0	346.5	5.7	59.6	331.5	3.8	57.8	319.4	2.3
300	80	210	59.3	340.5	5.2	57.9	324.6	3.5	56.1	311.9	2.1
300	80	220	57.6	334.0	4.9	56.0	317.2	3.2			
300	80	230	55.8	327.2	4.4	54.2	309.3	2.9			
300	80	240	54.0	319.9	4.2	52.2	300.8	2.7			
300	80	250	52.1	312.0	3.9	50.3	291.8	2.5			
300	80	260	50.2	303.6	3.6	48.2	282.1	2.3			
300	80	270	48.3	294.7	3.3	46.1	271.6	2.1			
300	80	280	46.2	285.0	2.6						
300	80	290	44.1	274.7	2.0						

Boom Length (ft)
240
240
240
240
240
240
240
240
240
240
240
240
240
240
240
240
240
240
240
240
240



Refer to all notes in front of the Crane Rating Manual before operating the machine.

Boom Length (ft)	Jib Length (ft)	Jib Load Radius (ft)	5 Degrees			15 Degrees			25 Degrees		
			Boom Angle (deg)	Jib Height (ft)	AB-AS Capacity (1000 lbs)	Boom Angle (deg)	Jib Height (ft)	AB-AS Capacity (1000 lbs)	Boom Angle (deg)	Jib Height (ft)	AB-AS Capacity (1000 lbs)
300	30	180	62.3	300.3	14.3 *	63.1	299.3	13.7 *	63.8	297.5	12.4 *
300	30	170	60.3	294.7	13.1 *	61.1	293.7	12.6 *	61.8	291.8	11.5 *
300	30	160	58.3	289.1	11.6 *	59.1	287.7	11.5 *	59.8	285.7	10.6 *
300	30	150	56.2	283.5	10.0 *	57.0	281.1	10.3 *	57.7	279.1	9.7 *
300	30	140	54.1	278.0	8.6 *	54.9	274.0	8.9 *	55.6	272.0	8.2 *
300	30	130	52.0	272.4	7.4 *	52.7	268.3	7.6 *	53.4	264.2	7.4 *
300	30	120	49.7	259.1	6.2 *	50.5	258.0	6.5 *	51.1	255.9	6.7 *
300	30	110	47.4	250.1	5.2 *	48.2	249.0	5.4 *	48.8	246.8	5.6 *
300	30	100	45.0	240.4	4.3 *	45.7	239.2	4.5 *	46.3	236.9	4.6 *
300	30	90	42.5	229.8	3.4 *	43.2	228.6	3.6 *			
300	30	80	39.8	218.2	2.6 *	40.6	216.9	2.8 *			
300	50	60	81.4	354.9	29.2 *	81.1	351.8	25.1 *	80.7	347.1	20.3 *
300	50	70	79.8	353.1	26.6 *	79.5	349.7	22.8 *	79.0	344.7	18.4 *
300	50	80	78.1	351.1	24.4 *	77.8	347.3	20.8 *	77.3	341.9	16.5 *
300	50	90	76.4	348.7	22.4 *	76.1	344.6	18.8 *	75.6	338.9	14.9 *
300	50	100	74.8	346.0	20.6 *	74.4	341.6	17.2 *	73.9	335.5	13.5 *
300	50	110	73.1	343.0	18.8 *	72.7	338.2	15.6 *	72.1	331.8	12.3 *
300	50	120	71.3	339.6	17.3 *	70.9	334.5	14.3 *	70.4	327.7	11.0 *
300	50	130	69.6	335.9	15.9 *	69.2	330.5	13.1 *	68.5	323.2	10.1 *
300	50	140	67.9	331.9	14.5 *	67.4	326.1	11.9 *	66.7	318.4	9.1 *
300	50	150	66.1	327.5	13.2 *	65.6	321.3	10.9 *	64.9	313.1	8.4 *
300	50	160	64.3	322.7	12.3 *	63.7	316.1	10.0 *	63.0	307.4	7.5 *
300	50	170	62.4	317.5	11.2 *	61.9	310.4	9.2 *	61.0	301.3	6.6 *
300	50	180	60.6	311.9	10.4 *	59.9	304.4	8.5 *	59.1	294.7	5.7 *
300	50	190	58.7	305.9	9.6 *	58.0	297.9	7.7 *	57.1	287.6	4.8 *
300	50	200	56.7	299.4	8.7 *	56.0	290.8	7.3 *	55.0	280.0	3.9 *
300	50	210	54.8	292.4	8.0 *	54.0	283.2	6.7 *	52.9	271.7	3.0 *
300	50	220	52.7	284.9	6.8 *	51.8	275.1	6.2 *	50.6	262.8	2.1 *
300	50	230	50.6	276.8	5.8 *	49.7	266.3	5.2 *	48.4	253.1	1.2 *
300	50	240	48.5	268.0	4.8 *	47.4	256.8	4.3 *	46.0	242.7	0.3 *
300	50	250	46.2	258.6	4.0 *	45.1	246.5	3.5 *			
300	50	260	43.9	248.4	3.2 *	42.6	235.3	2.7 *			
300	50	270	41.5	237.3	2.5 *						
300	70	70	80.6	373.4	21.7 *	80.8	369.7	18.7 *	80.9	363.9	14.2 *
300	70	80	79.0	371.5	20.5 *	79.2	367.4	16.8 *	79.3	361.3	12.6 *
300	70	90	77.4	369.2	18.8 *	77.7	364.9	15.2 *	77.7	358.5	11.2 *
300	70	100	75.9	366.7	17.3 *	76.0	362.0	13.7 *	76.1	355.3	10.1 *
300	70	110	74.3	363.8	15.7 *	74.4	358.9	12.5 *	74.4	351.7	9.0 *
300	70	120	72.6	360.7	14.4 *	72.8	355.4	11.3 *	72.7	347.9	8.2 *
300	70	130	71.0	357.2	13.1 *	71.1	351.6	10.3 *	71.0	343.7	7.3 *
300	70	140	69.4	353.4	12.1 *	69.5	347.4	9.3 *	69.3	339.2	6.7 *
300	70	150	67.7	349.3	11.0 *	67.8	342.9	8.6 *	67.6	334.2	5.9 *
300	70	160	66.0	344.8	10.1 *	66.0	338.1	7.8 *	65.8	328.9	5.4 *
300	70	170	64.3	340.0	9.2 *	64.3	332.8	7.1 *	64.0	323.2	4.9 *
300	70	180	62.6	334.8	8.5 *	62.5	327.2	6.5 *	62.2	317.1	4.5 *
300	70	190	60.8	329.2	7.8 *	60.7	321.2	6.0 *	60.3	310.5	4.1 *
300	70	200	59.0	323.2	7.2 *	58.9	314.7	5.5 *	58.4	303.5	3.7 *
300	70	210	57.2	316.7	6.7 *	57.0	307.7	5.0 *	56.5	295.9	3.4 *
300	70	220	55.3	309.8	6.2 *	55.0	300.2	4.7 *	54.4	287.7	3.2 *
300	70	230	53.4	302.4	5.7 *	53.1	292.2	4.4 *			
300	70	240	51.4	294.4	5.3 *						

28p1132

1/2

LIVE MAST LIFTING CAPACITIES

MAST RADIUS	CAPACITY (NO COUNTERWEIGHT)	
	ON TIRES	ON OUTRIGGERS
12' - 17' (3.66 m - 5.18 m)	47,000 lb (21.3 m tons)	85,000 lb (38.6 m tons)
17' - 28' (5.18 m - 8.53 m)	30,000 lb (13.6 m tons)	85,000 lb (38.6 m tons)



CAUTION

1. REFER TO OPERATOR'S MANUAL.
2. LIVE MAST BACKSTOPS MUST BE IN POSITION AND OPERATIVE.
3. USE REAR DRUM ONLY. REEVE HOIST LINE TO DRUM OVER MAST CROSS MEMBER.
4. REEVE HOIST ROPE WITH THREE (3) PARTS OF 1.00" OR 1 1/8" (25.4 MM OR 28.6 MM) DIAMETER WIRE ROPE.
5. 85,000 LB (38.6 M TONS) CAPACITY IS BASED ON STRENGTH OF MATERIAL.
6. REFER TO "CRANE ASSEMBLY COMPONENT WEIGHTS" FOR WEIGHTS OF COMPONENTS WHEN LIFTING FROM LIVE MAST.

ON TIRE

BOOM
CAPACITIES

JIB